

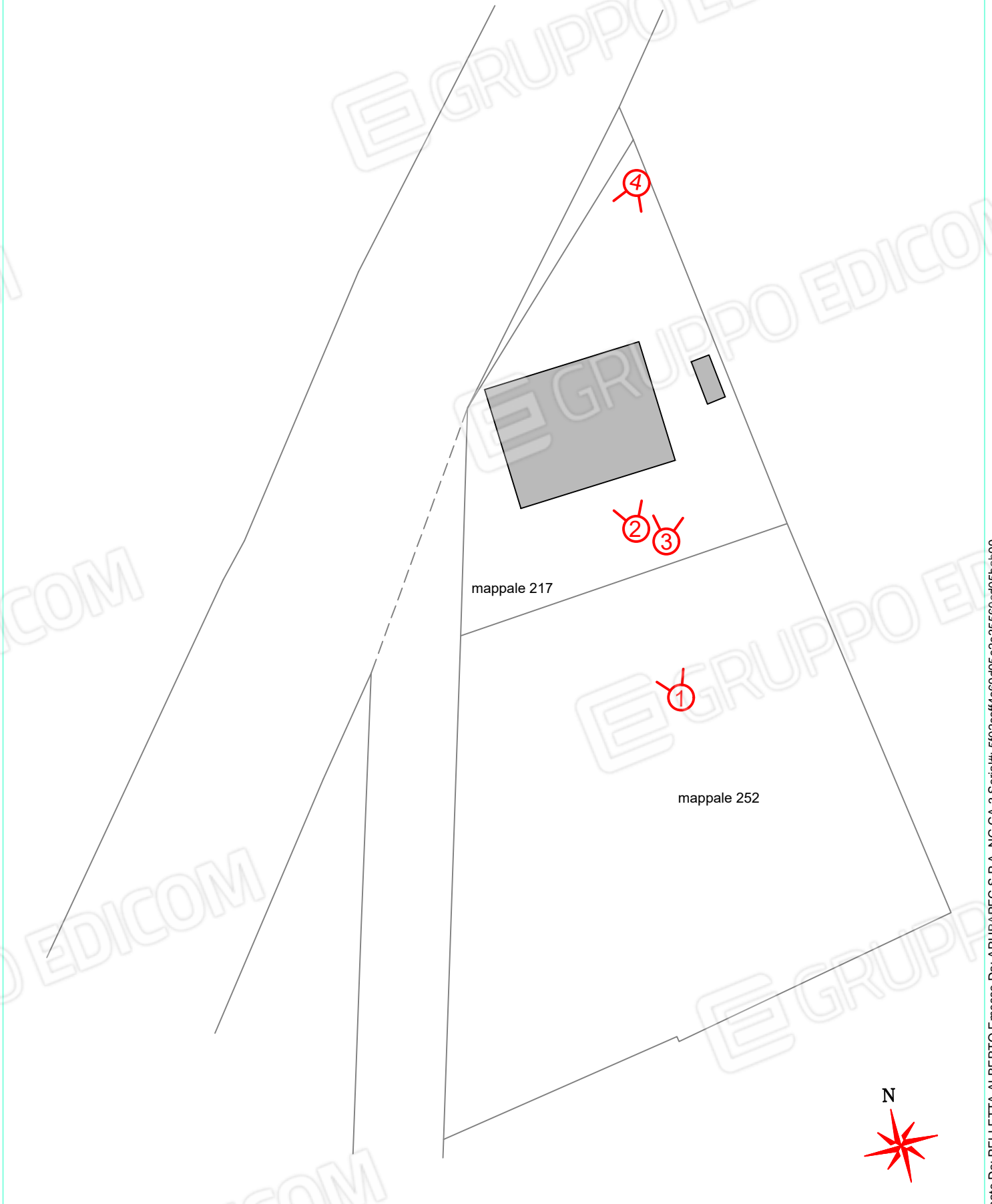
ALLEGATO 5

Documentazione fotografica



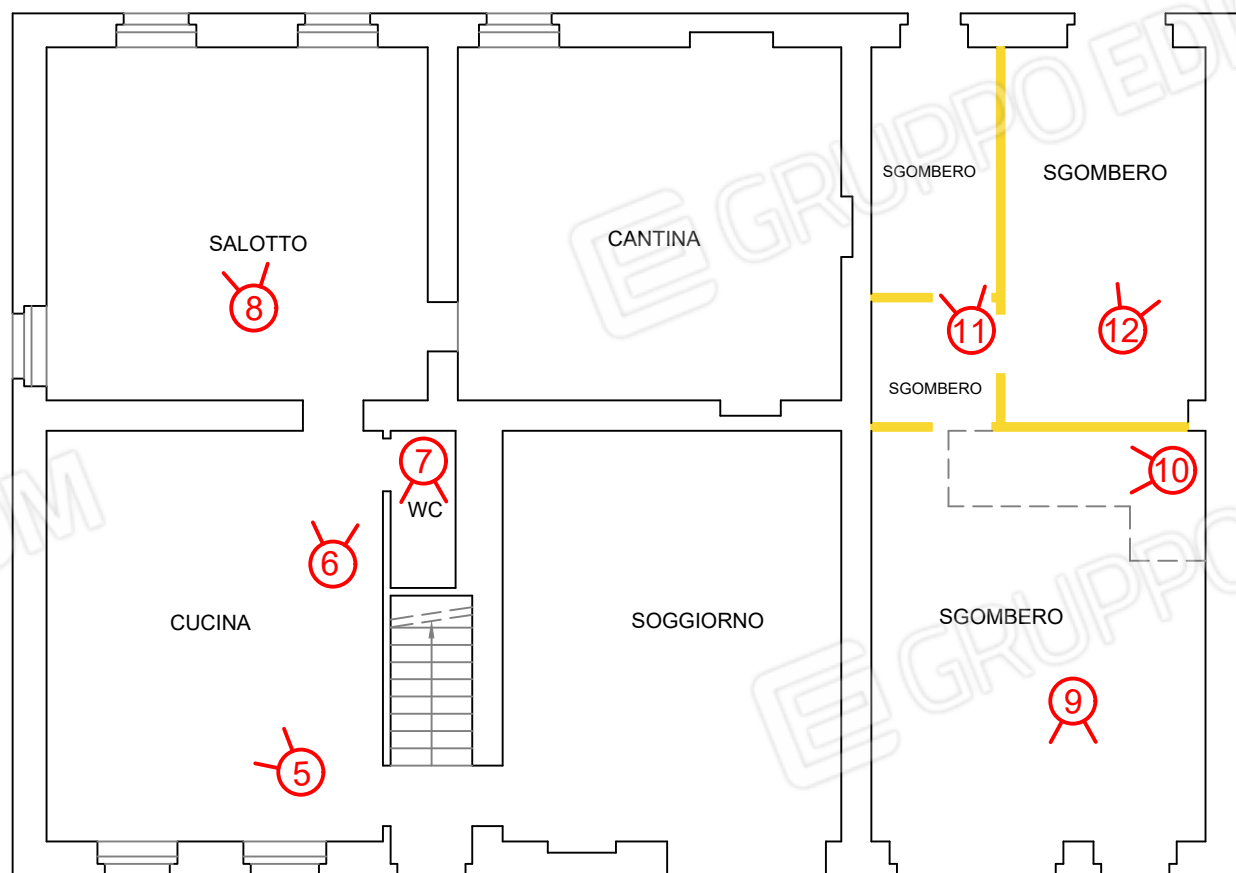
PLANIMETRIA - scala 1:500

punti di vista fotografici

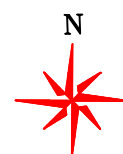


PIANO TERRA

punti di vista fotografici

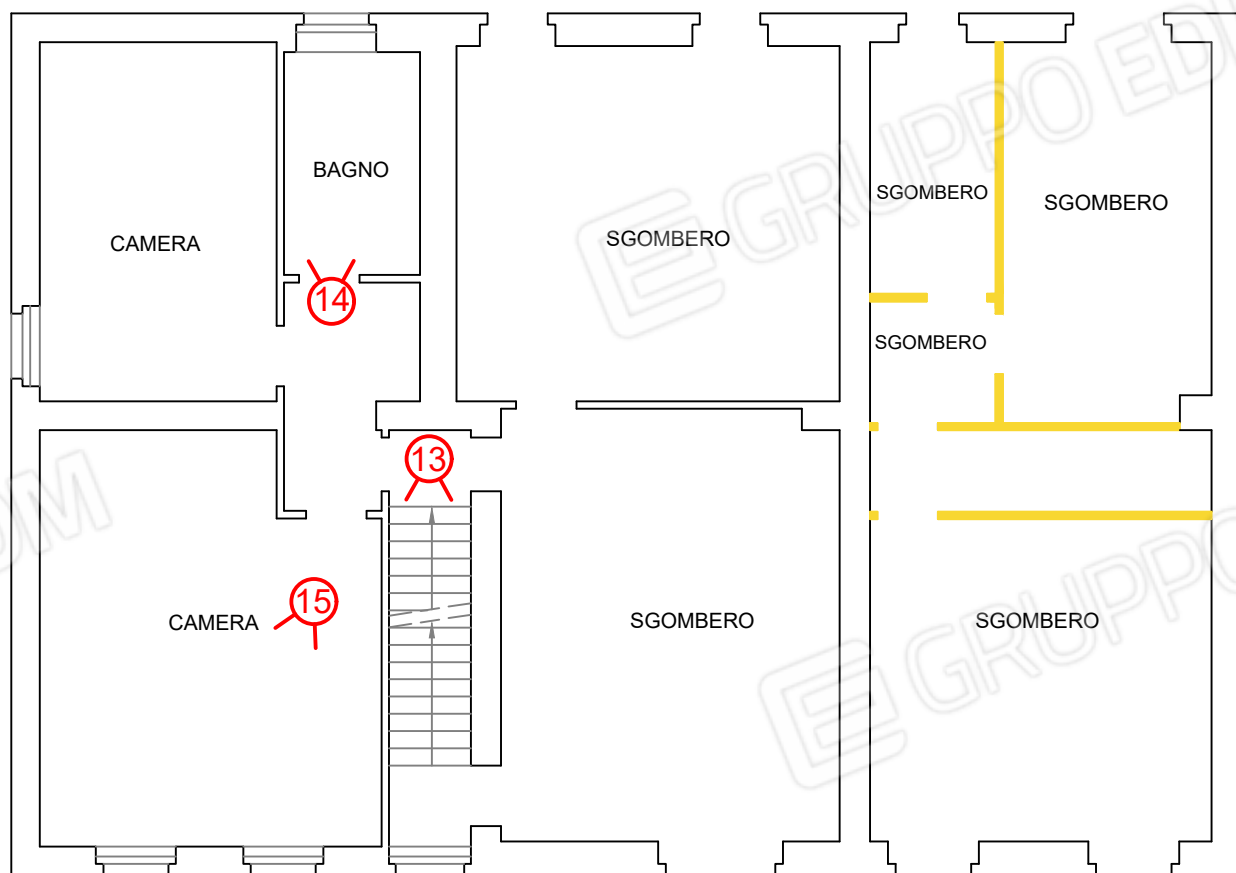


 Tramezze da demolire

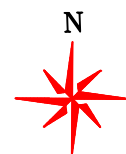


PRIMO PIANO

punti di vista fotografici



 Tramezze da demolire

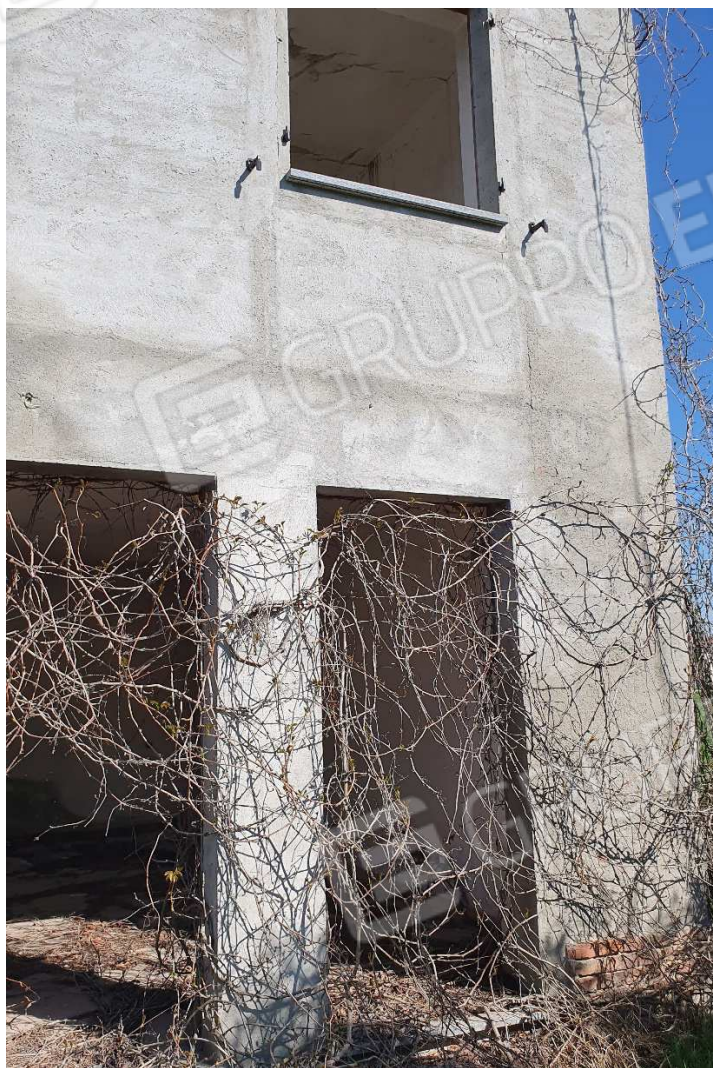




Fotografia 1



Fotografia 2



Fotografia 3



Fotografia 4



Fotografia 5



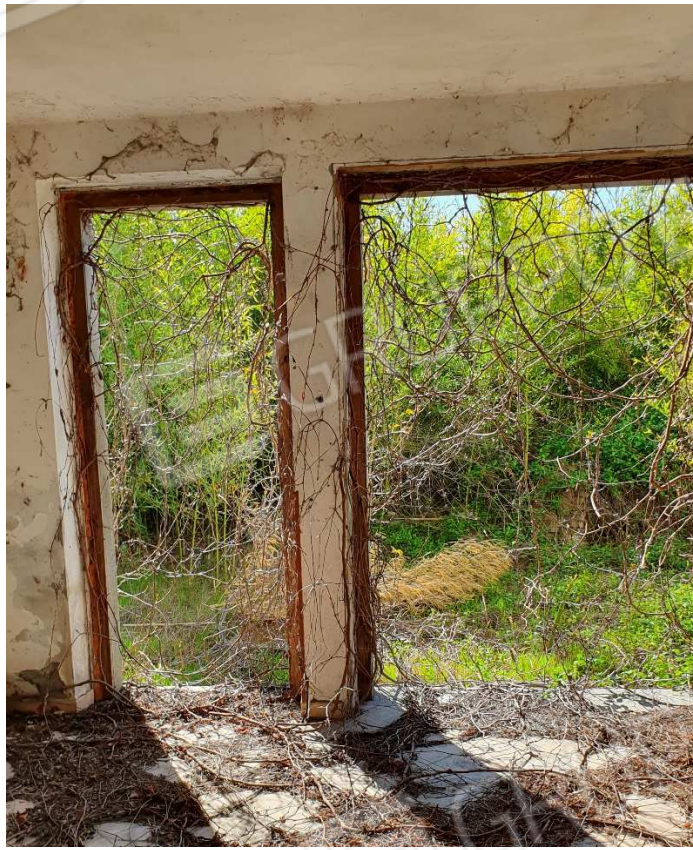
Fotografia 6



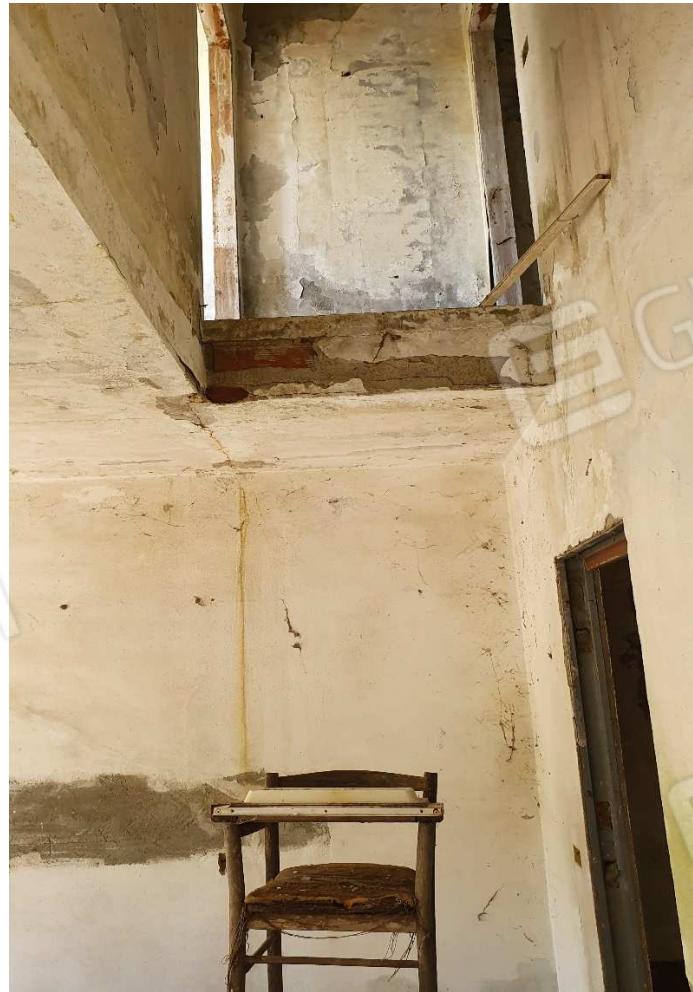
Fotografia 7



Fotografia 8



Fotografia 9



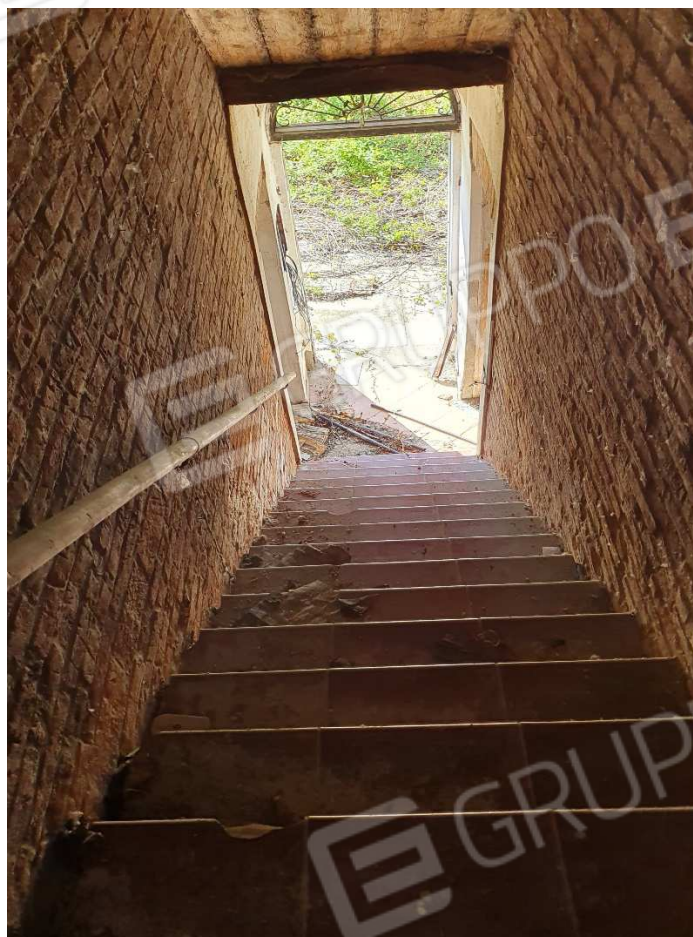
Fotografia 10



Fotografia 11



Fotografia 12



Fotografia 13



Fotografia 14



Fotografia 15