

*Studio d'Ingegneria
Dott. Ing. Pasquale Tomaiuolo
via Luigi Treggiari, 8 – 71121 Foggia
tel./fax 0881 20.47.58 – mob. 338 96.47.511
p.e.c.: pasquale.tomaiuolo@ingpec.eu
e.mail: tomaiuolo_pasquale@libero.it*

TRIBUNALE ORDINARIO DI FOGGIA

UFFICIO ESECUZIONI IMMOBILIARI

ESECUZIONE IMMOBILIARE

N. 333/2018 R.G.Es.

Creditore Procedente:

Giudice dell'Esecuzione:
Dott. Michele PALAGANO

DOCUMENTAZIONE FOTOGRAFICA ALLEGATA ALLA CTU INTEGRATIVA

*L'esperto incaricato
Dott. Ing. Pasquale TOMAIUOLO*

Foggia, 23 marzo 2022



1.JPG



2.JPG



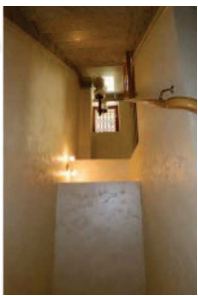
3.JPG



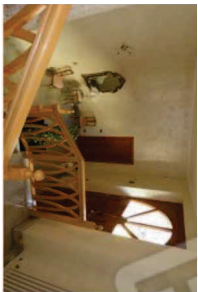
4.JPG



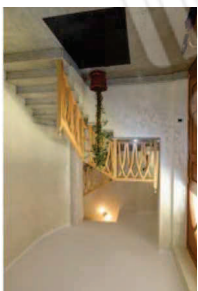
5.JPG



6.JPG



7.JPG



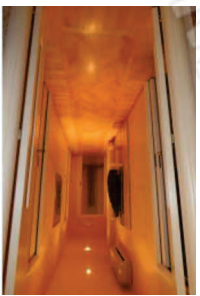
8.JPG



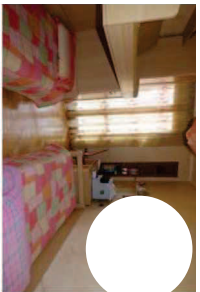
9.JPG



10.JPG



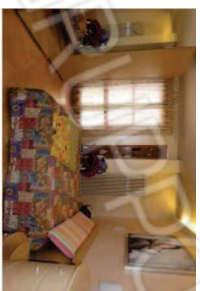
11.JPG



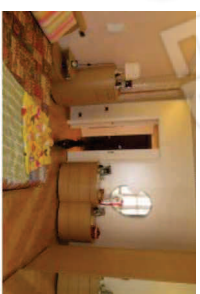
12.JPG



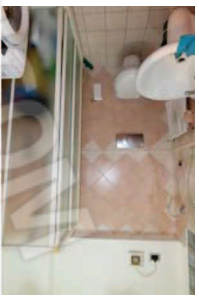
13.JPG



14.JPG



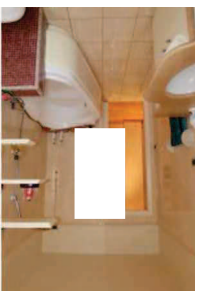
15.JPG



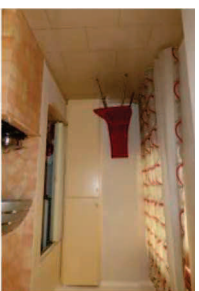
16.JPG



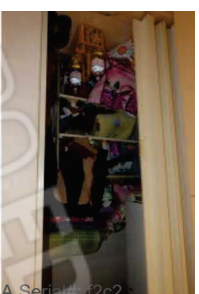
17.JPG



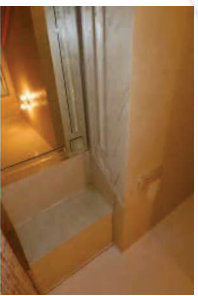
18.JPG



19.JPG



20.JPG



21.JPG



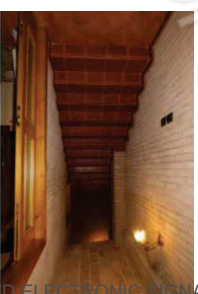
22.JPG



23.JPG



24.JPG



25.JPG



26.JPG



27.JPG



28.JPG



29.JPG



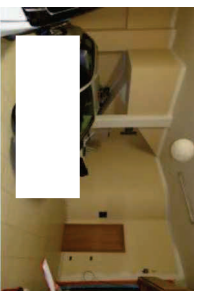
30.JPG



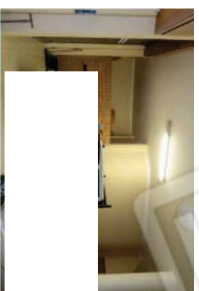
31.JPG



32.JPG



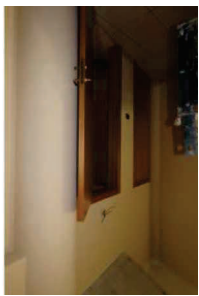
33.JPG



34.JPG



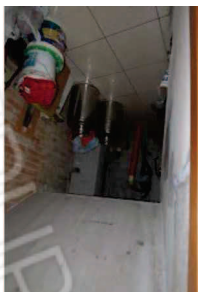
35.JPG



36.JPG



37.JPG



38.JPG



39.JPG



40.JPG



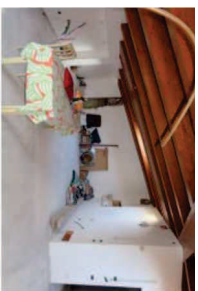
41.JPG



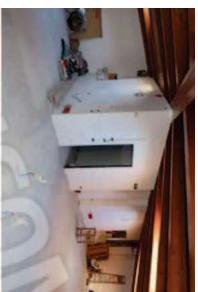
42.JPG



43.JPG



44.JPG



45.JPG



46.JPG



47.JPG



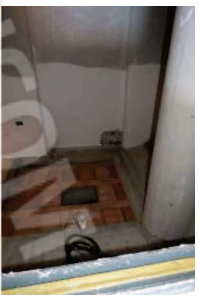
48.JPG



49.JPG



50.JPG



51.JPG



52.JPG



53.JPG













