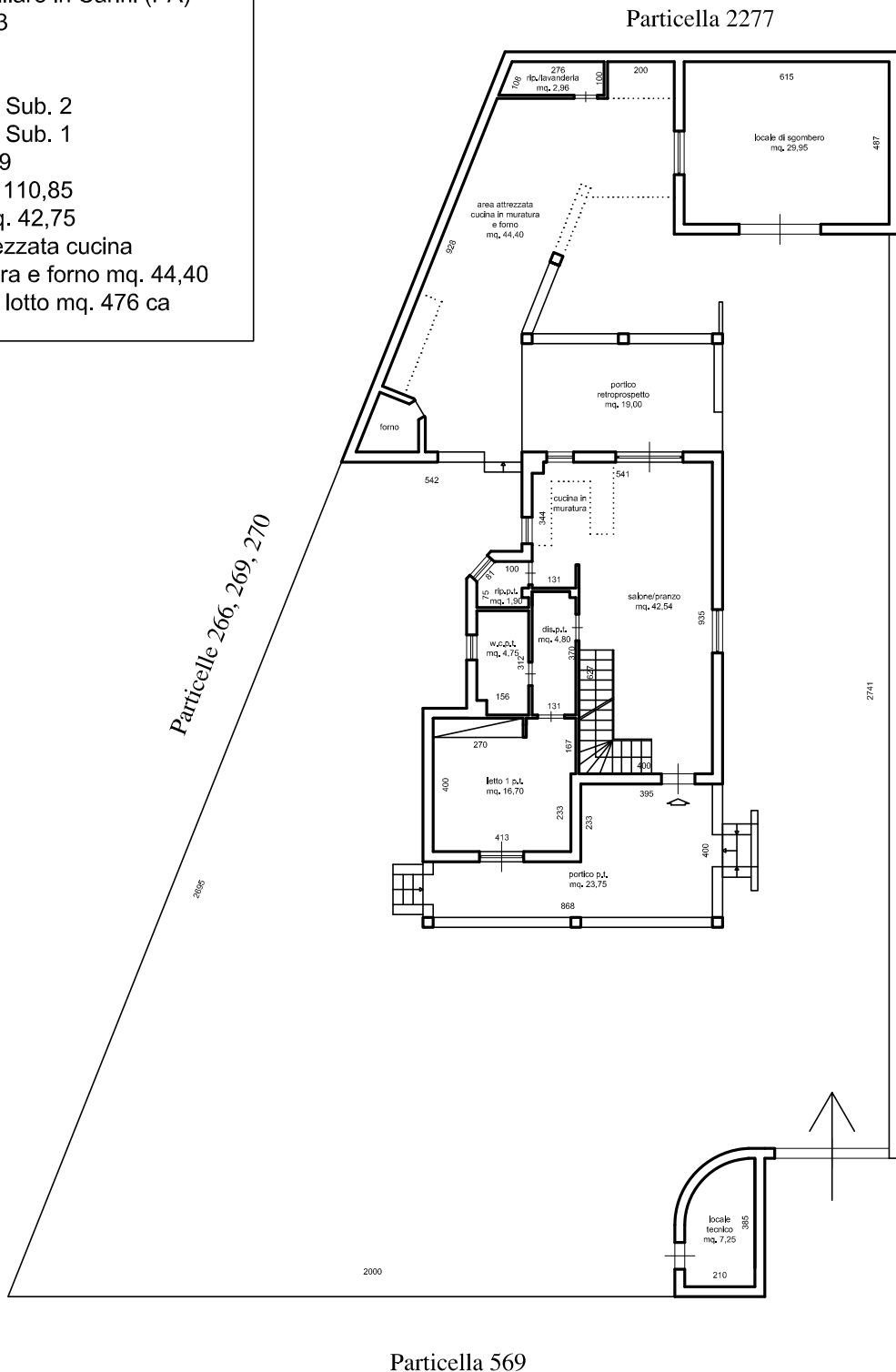


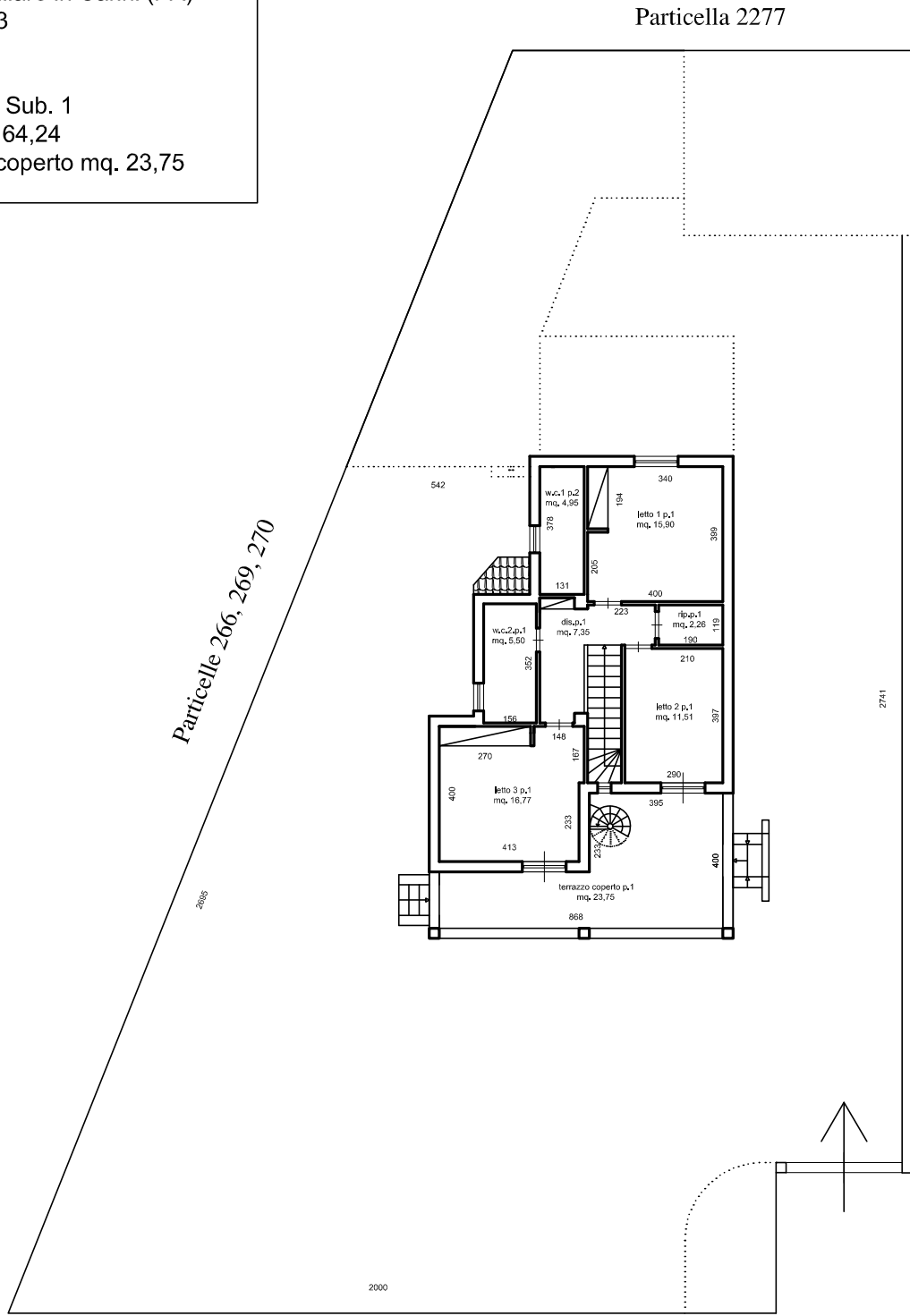


Villetta unifamiliare in Carini (PA)  
 Via Robinia, 43  
 Piano Terreno  
 Dati catastali:  
 Fg. 5 P.IIa 412 Sub. 2  
 Fg. 5 P.IIa 827 Sub. 1  
 Fg. 5 P.IIa 1479  
 Sup. Utile mq. 110,85  
 Sup. portici mq. 42,75  
 Sup. area attrezzata cucina  
 in muratura e forno mq. 44,40  
 Sup. libera del lotto mq. 476 ca





Villetta unifamiliare in Carini (PA)  
 Via Robinia, 43  
 Piano Primo  
 Dati catastali:  
 Fg. 5 P.IIa 827 Sub. 1  
 Sup. Utile mq. 64,24  
 Sup. terrazzo coperto mq. 23,75



*Particelle 266, 269, 270*

Particella 2277

Particelle 412 Sub. 1 e Sub. 3, Particella 827 Sub. 2

Particella 569



Villetta unifamiliare in Carini (PA)  
 Via Robinia, 43  
 Terrazzo di copertura  
 Dati catastali: da catastare  
 Sup. terrazzo di copertura mq. 71,17

