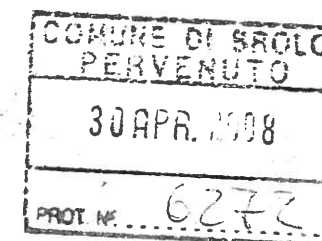




COMUNE DI BROLO

(Provincia di Messina)



OGGETTO : PROGETTI ESECUTIVI dei fabbricati per civile abitazione da realizzare in attuazione di un Piano di Lottizzazione in zona C.2 in località Piana: Lotto 6 - Fabbricato F.



Allegato n° 3

Elaborati grafici corpo F - Lotto n° 6

IL RESPONSABILE U.O.S.
MEDICINA PREVENTIVA
(Cap. Spivataro 3-200)

IL PROGETTISTA:
Arch. Gammeri Valentino



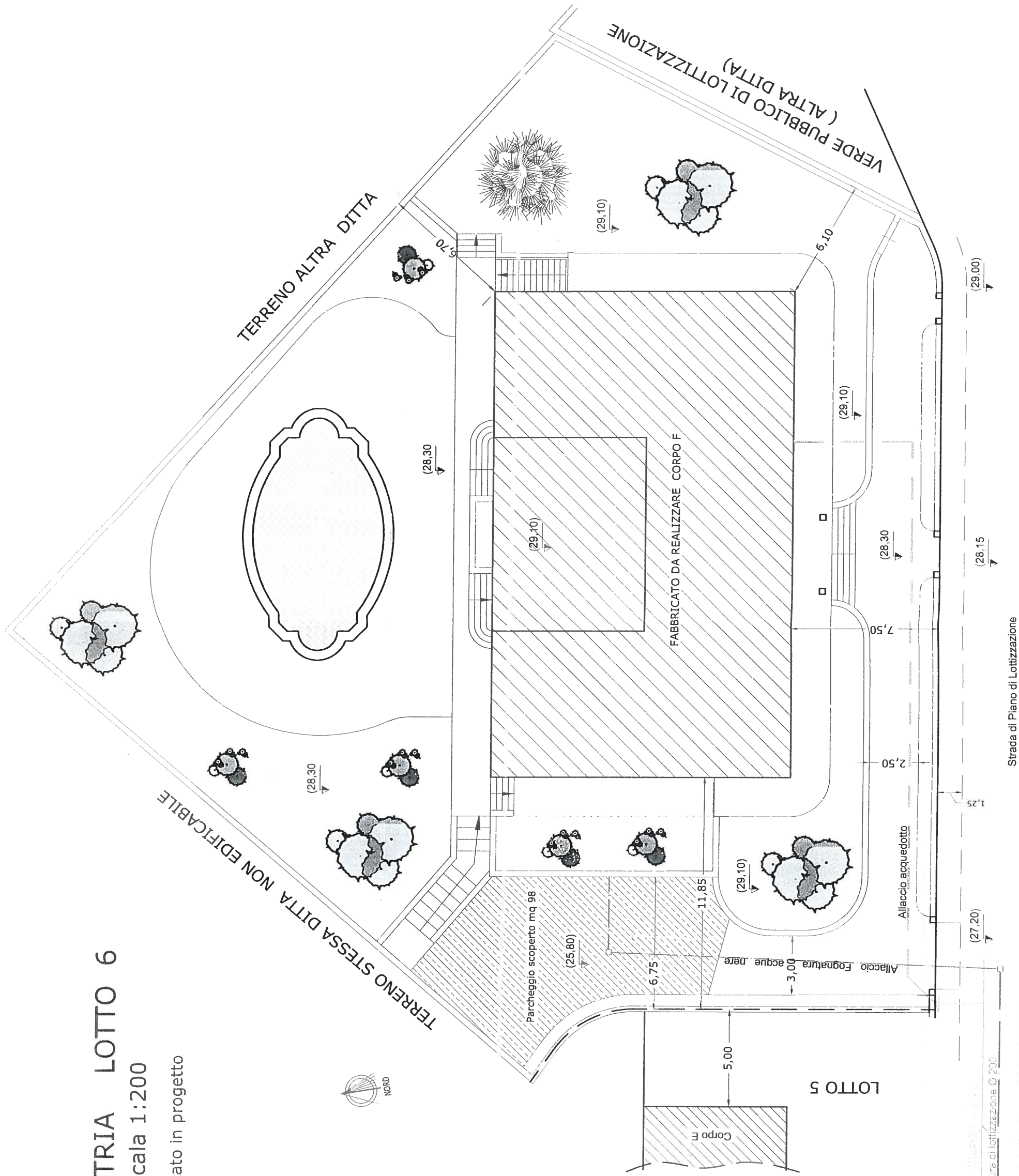
IRICA

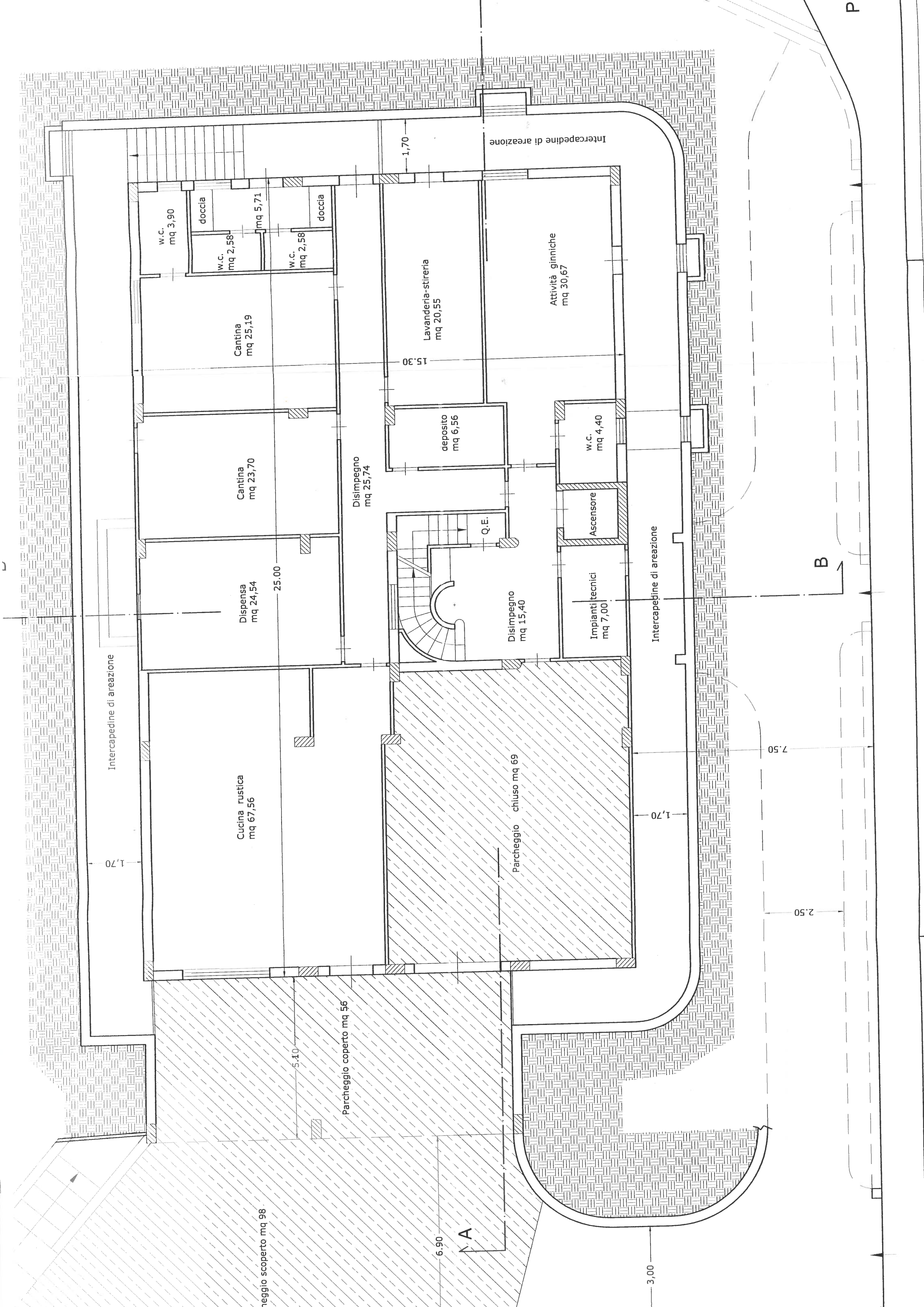
one

PLANIMETRIA LOTTO 6

Scala 1:200

Fabbricato in progetto





Intercapedine di areazione

Intercapedine di areazione

Intercapedine di areazione

B

A

PIA

1,70

25,00

15,30

1,70

5,10

6,90

3,00

1,70

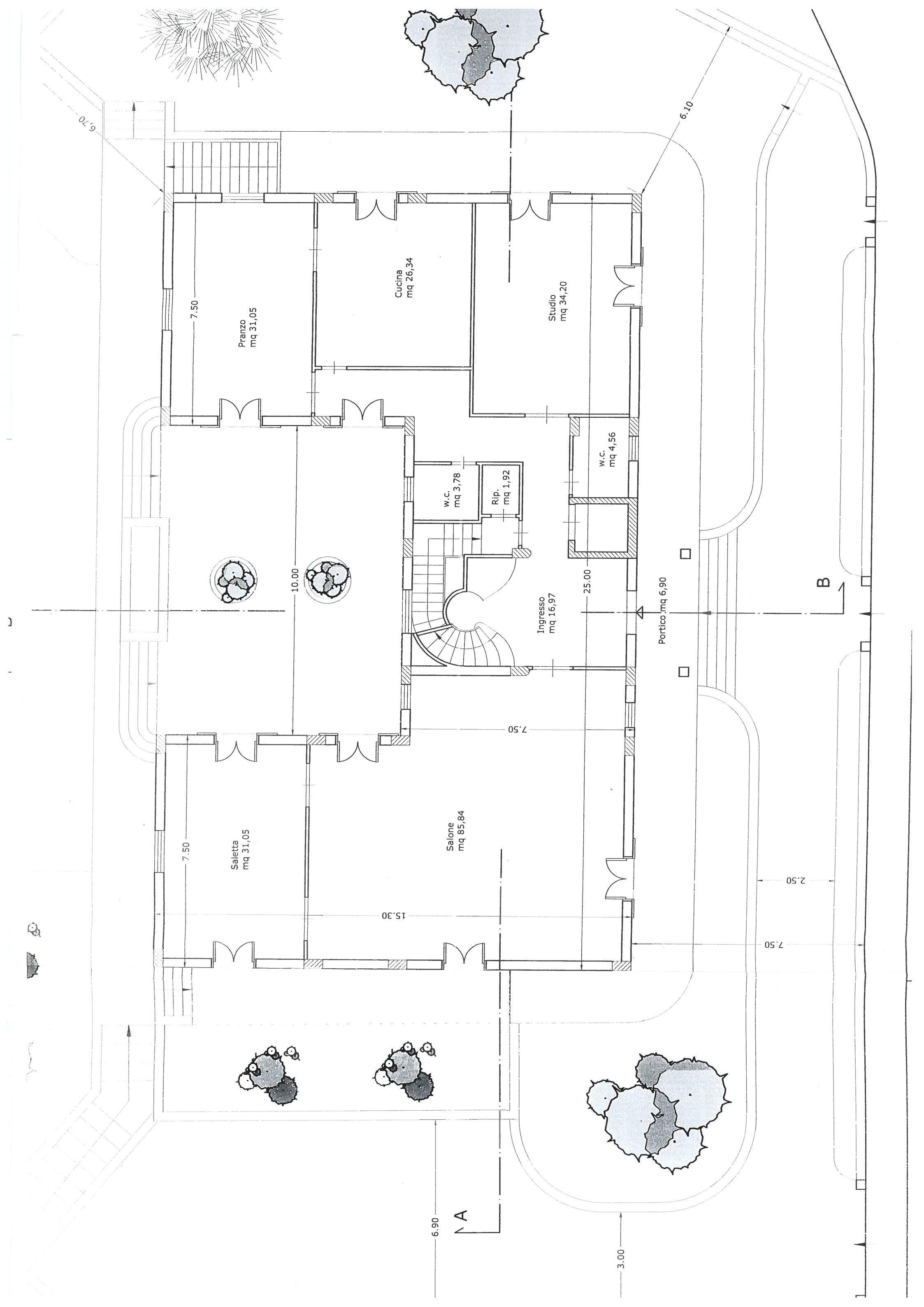
7,50

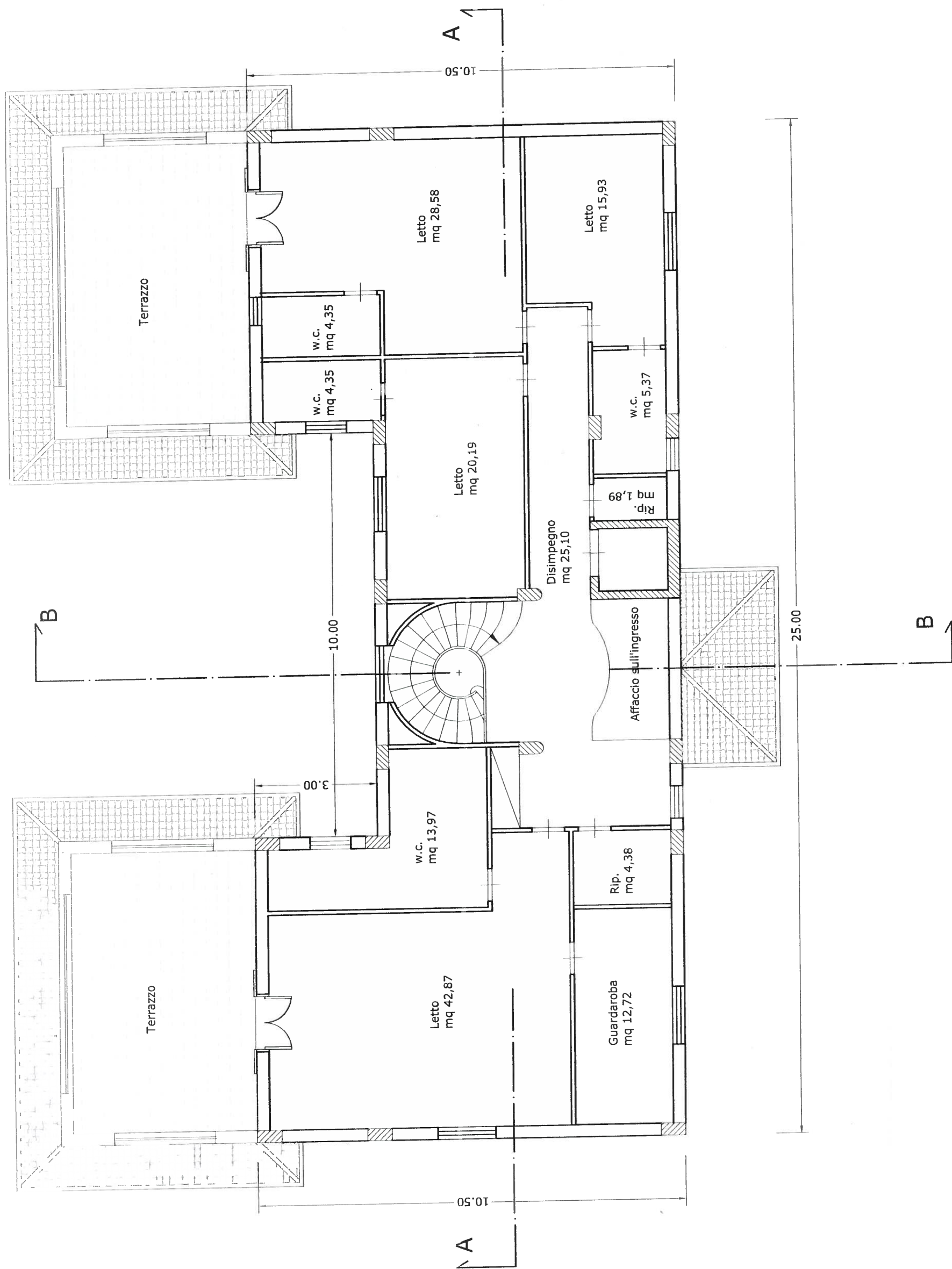
2,50

Parcheggio scoperto mq 98

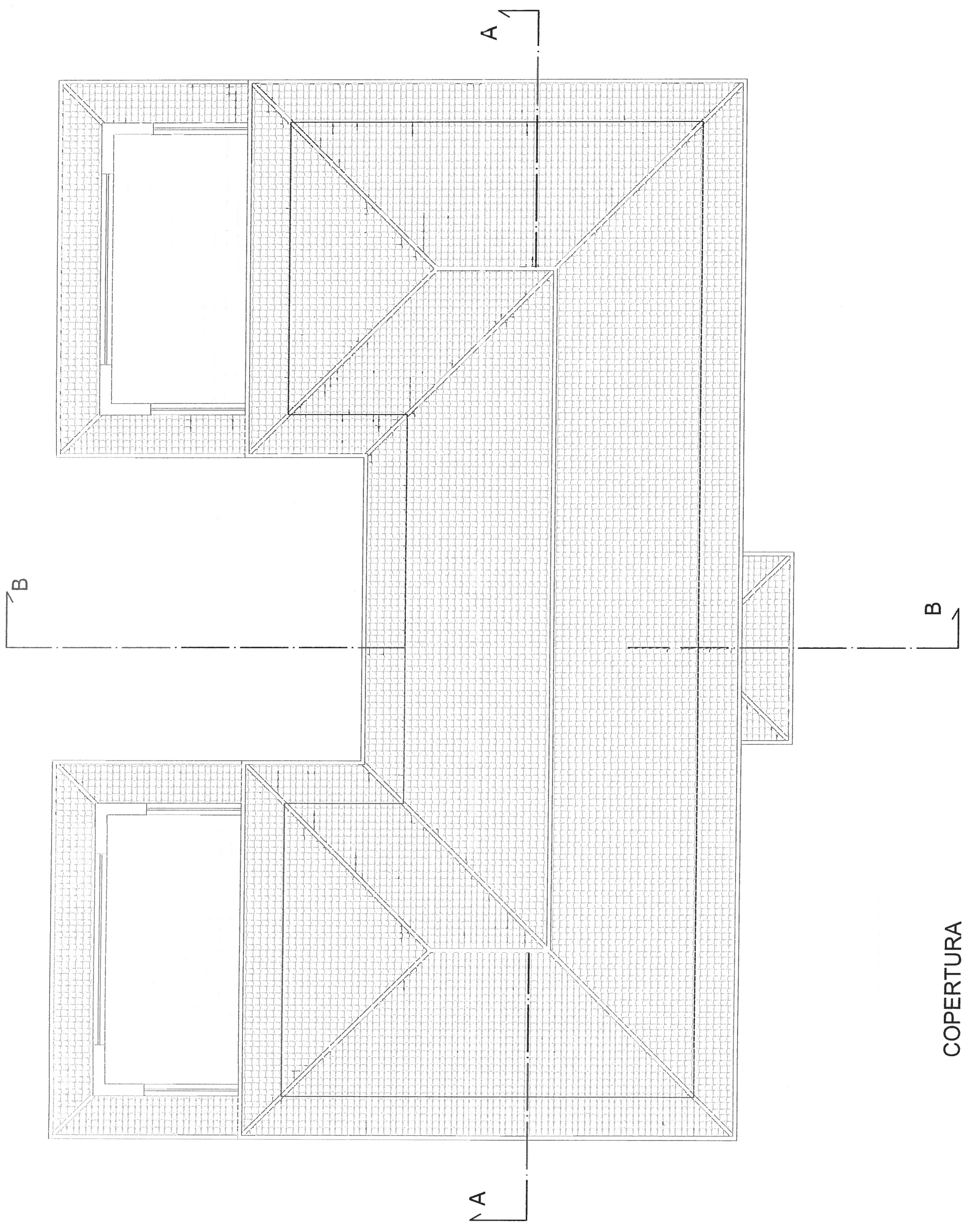
Parcheggio coperto mq 56

Parcheggio chiuso mq 69

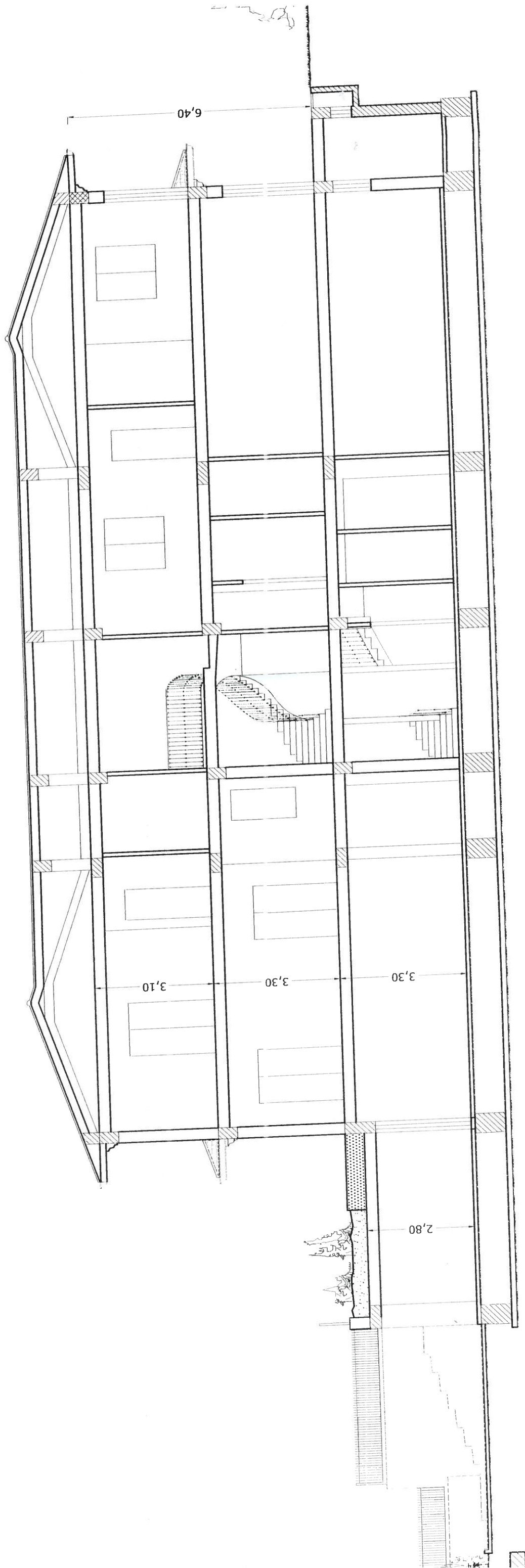




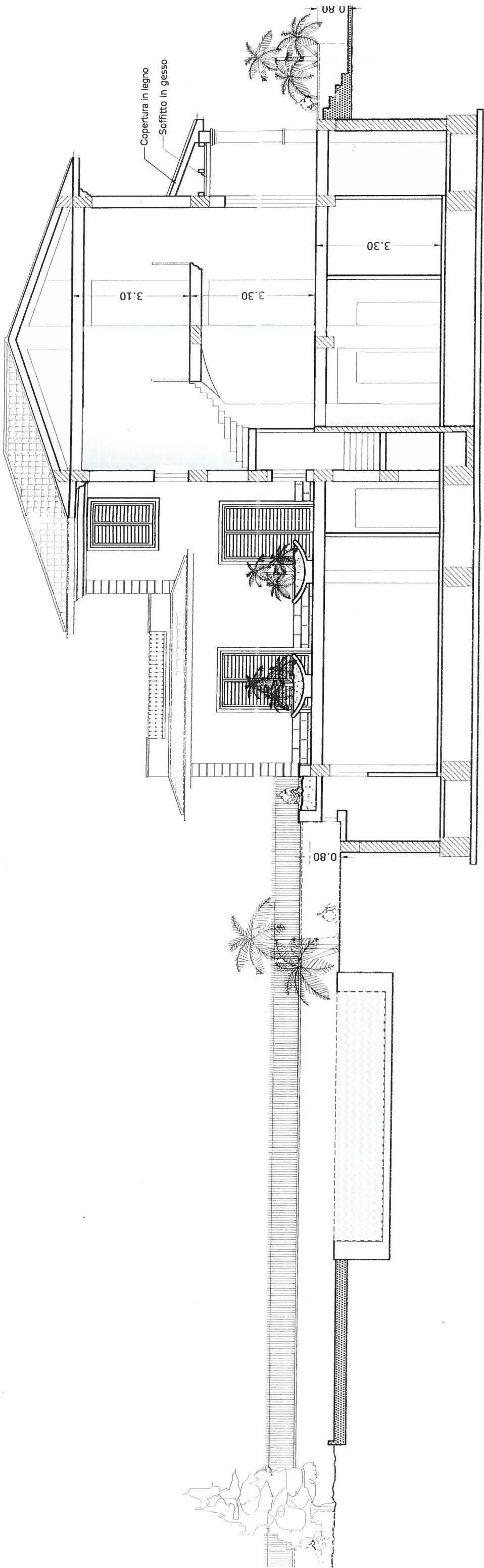
PIANTA PIANO PRIMO



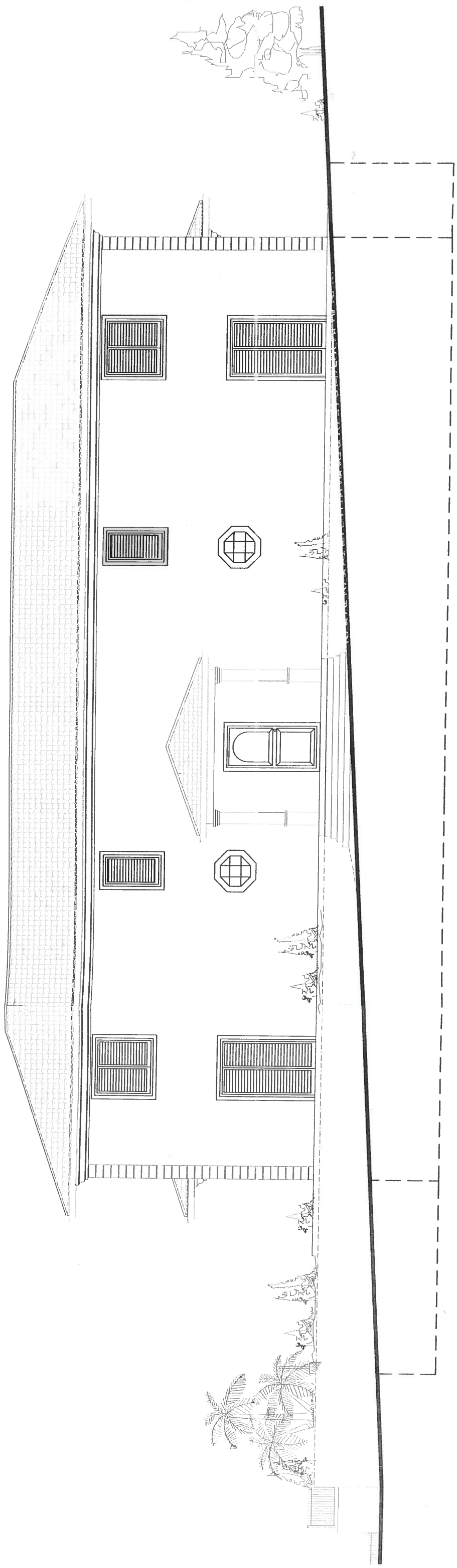
COPERTURA



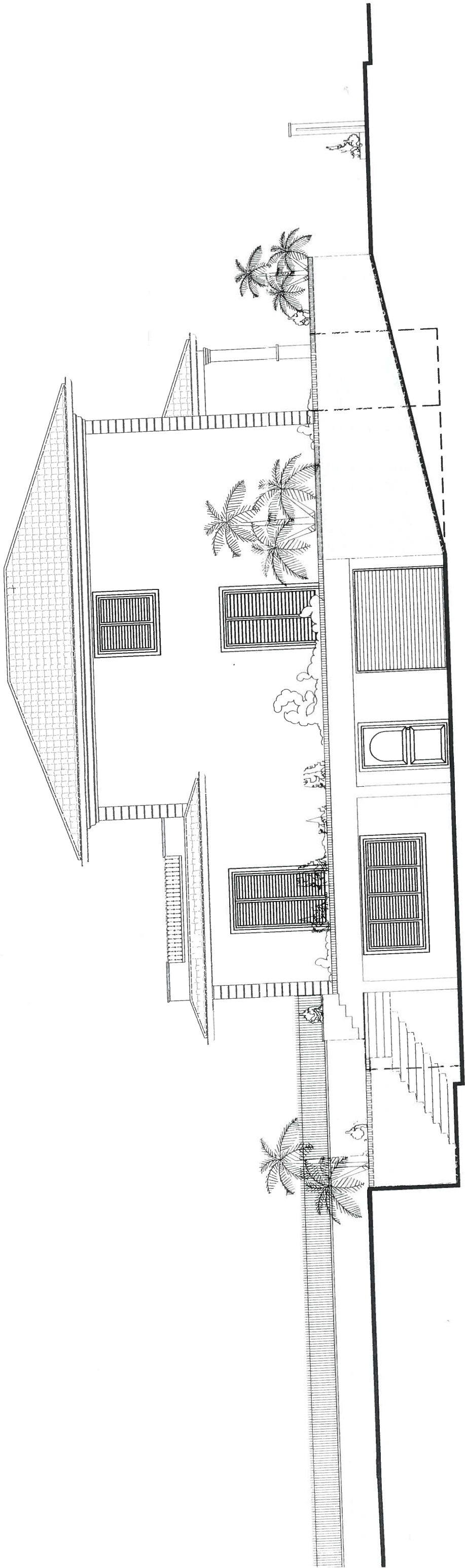
SEZIONE A-A



SEZIONE B-B



PROSPETTO FRONTALE SUD



PROSPETTO LATERALE OVEST