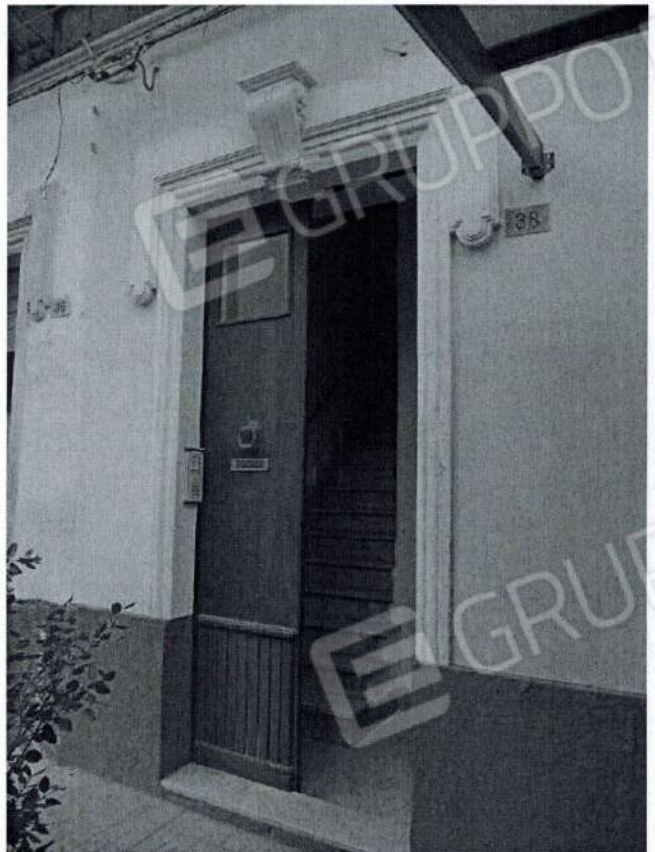
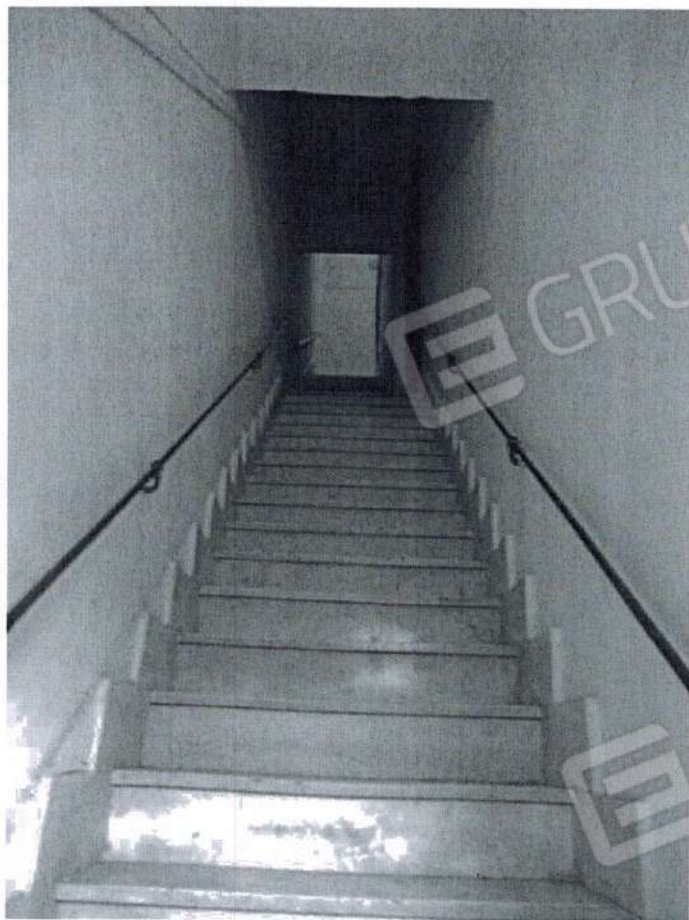




01: Prospetto su via Roma



02: Ingresso Civ. n. 38 da Via Roma



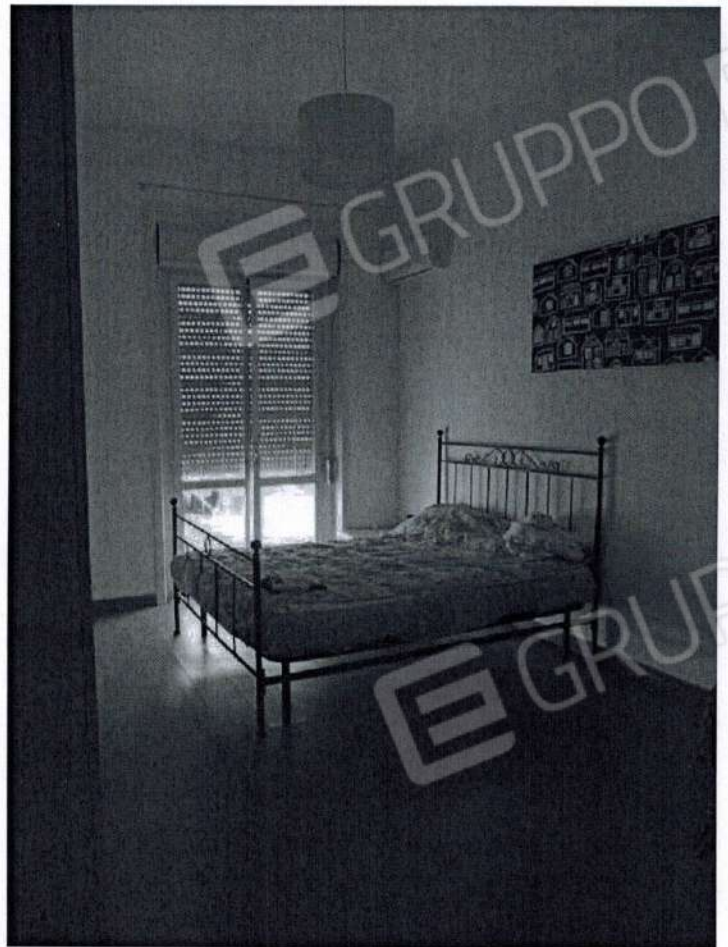
03: Rampa Scala di collegamento P. terra/P.1°



04: Ingresso U.I. P.IIa 3658 sub 20;



05: Disimpegno di Ingresso;



06: Vano Camera da Letto;



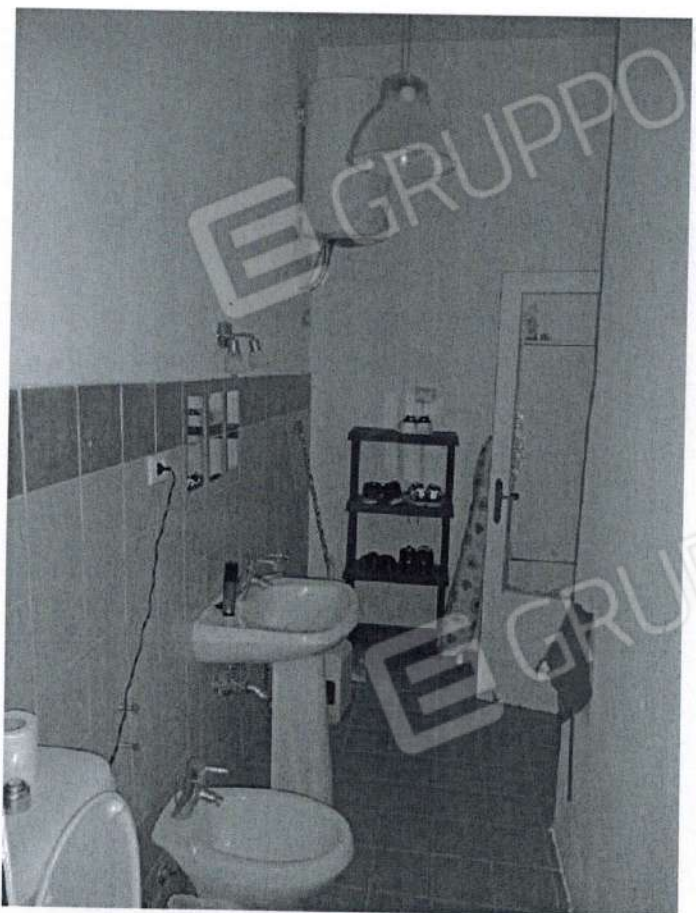
07: Vano Soggiorno/Pranzo;



08: Disimpegno;



09: Vano Wc;



10: Vano Wc;