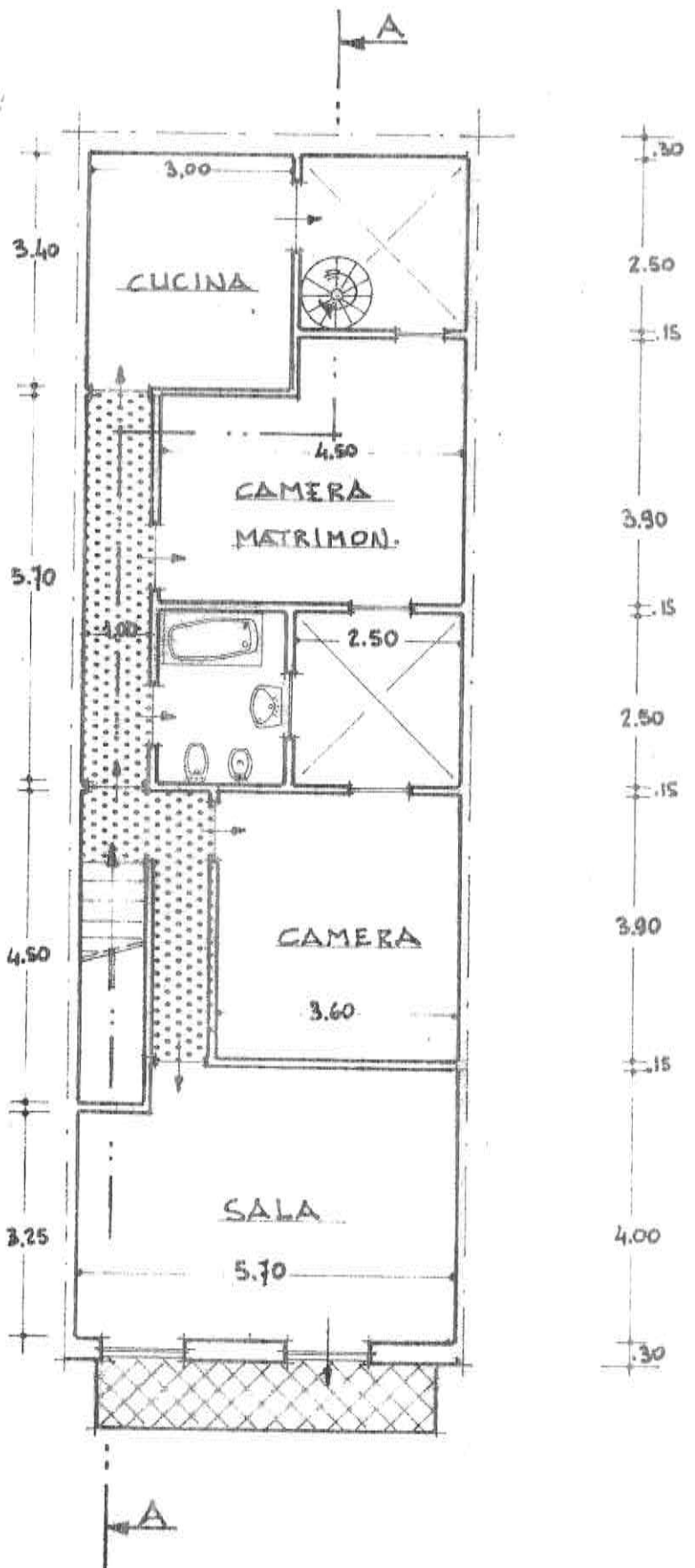
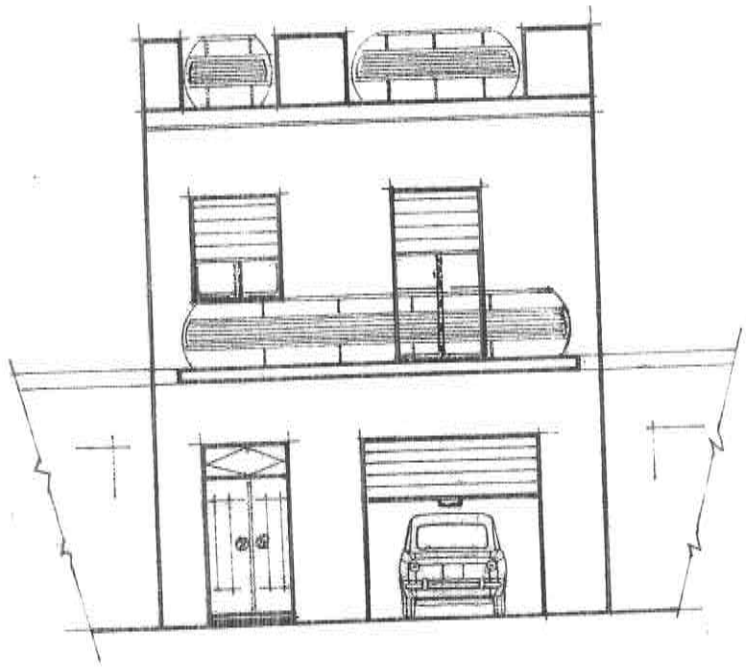


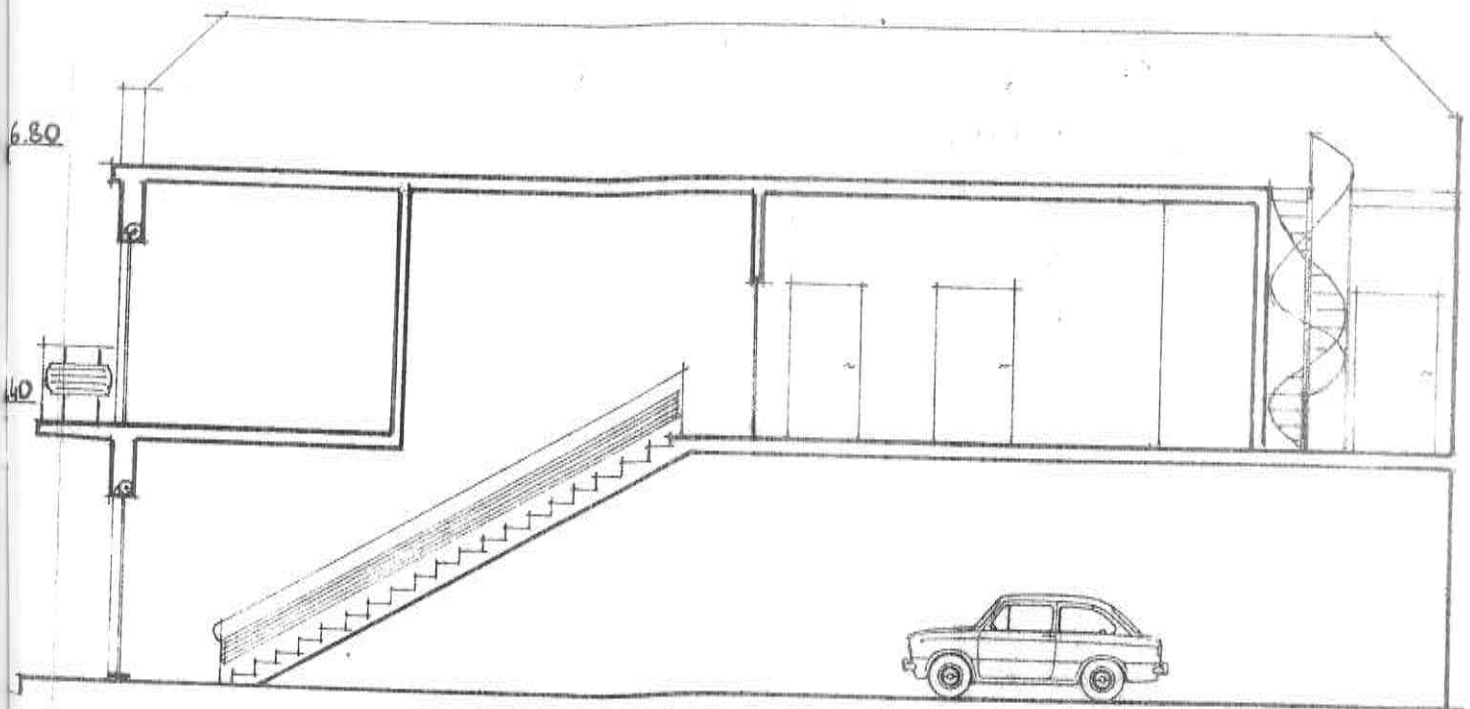
PIANTA P. TERRA



PIANTA 1° PIANO



PROSPETTO



SEZIONE A-A

CALCOLI

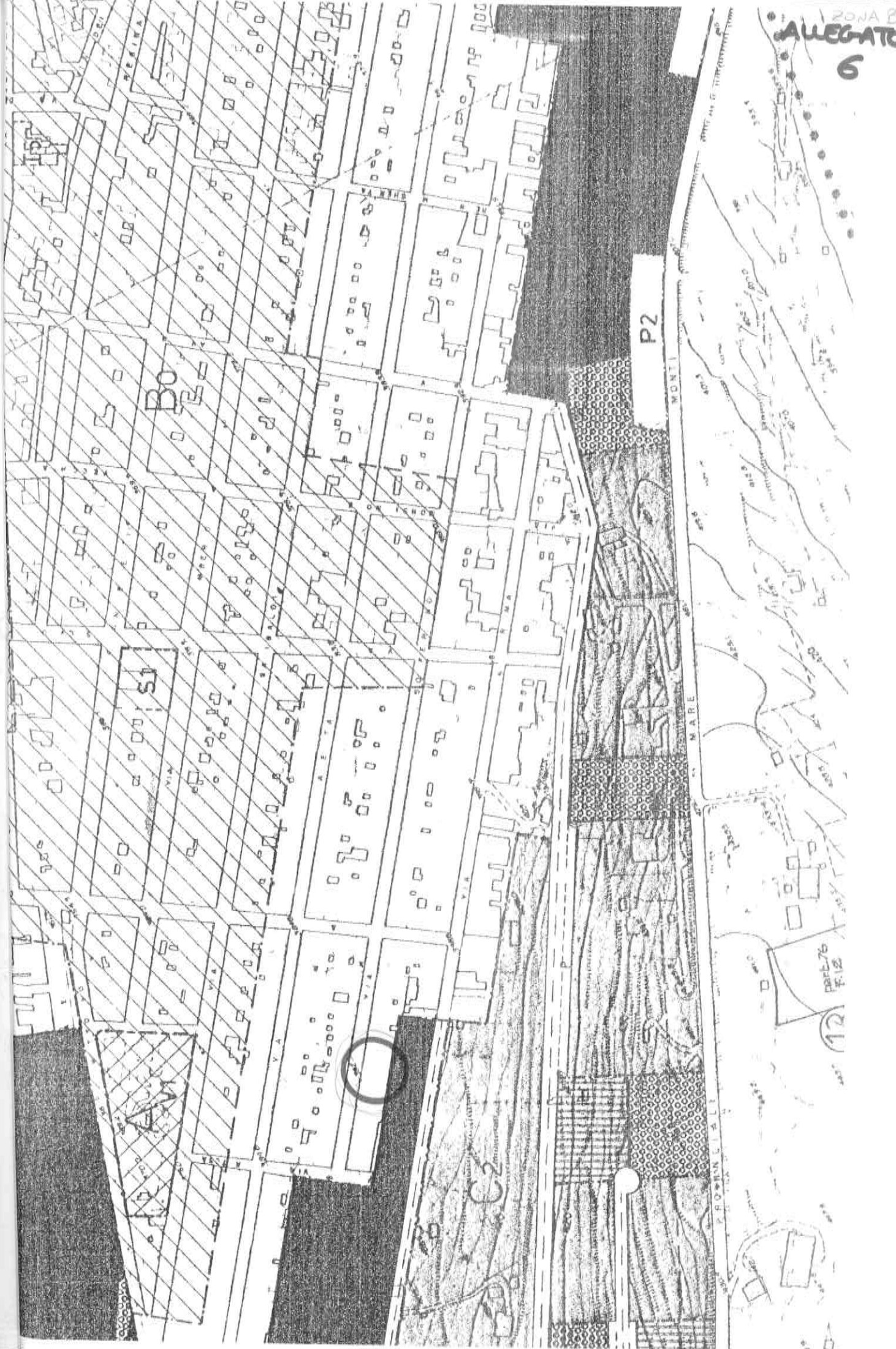
AREA LOTTO : $18.00 \times 6.00 = 108 \text{ mq} < 120$

DENS. EDILIZIA : 8 mc/mq ; $h = 6.80 \text{ mt}$

$V_{\text{CONSENTITO}} : 8 \times 108 = 864 \text{ mc}$

$V_{\text{COSTRUITO}} : (108 - 6.25) \times 3.40 + (108 - 12.5) \times 3.40 = 101.75 \times 3.40 +$

$+ 95.5 \times 3.40 = 325 + 316 = 641 \text{ mc} < 864$



P2

Part 26
F. 12

12