

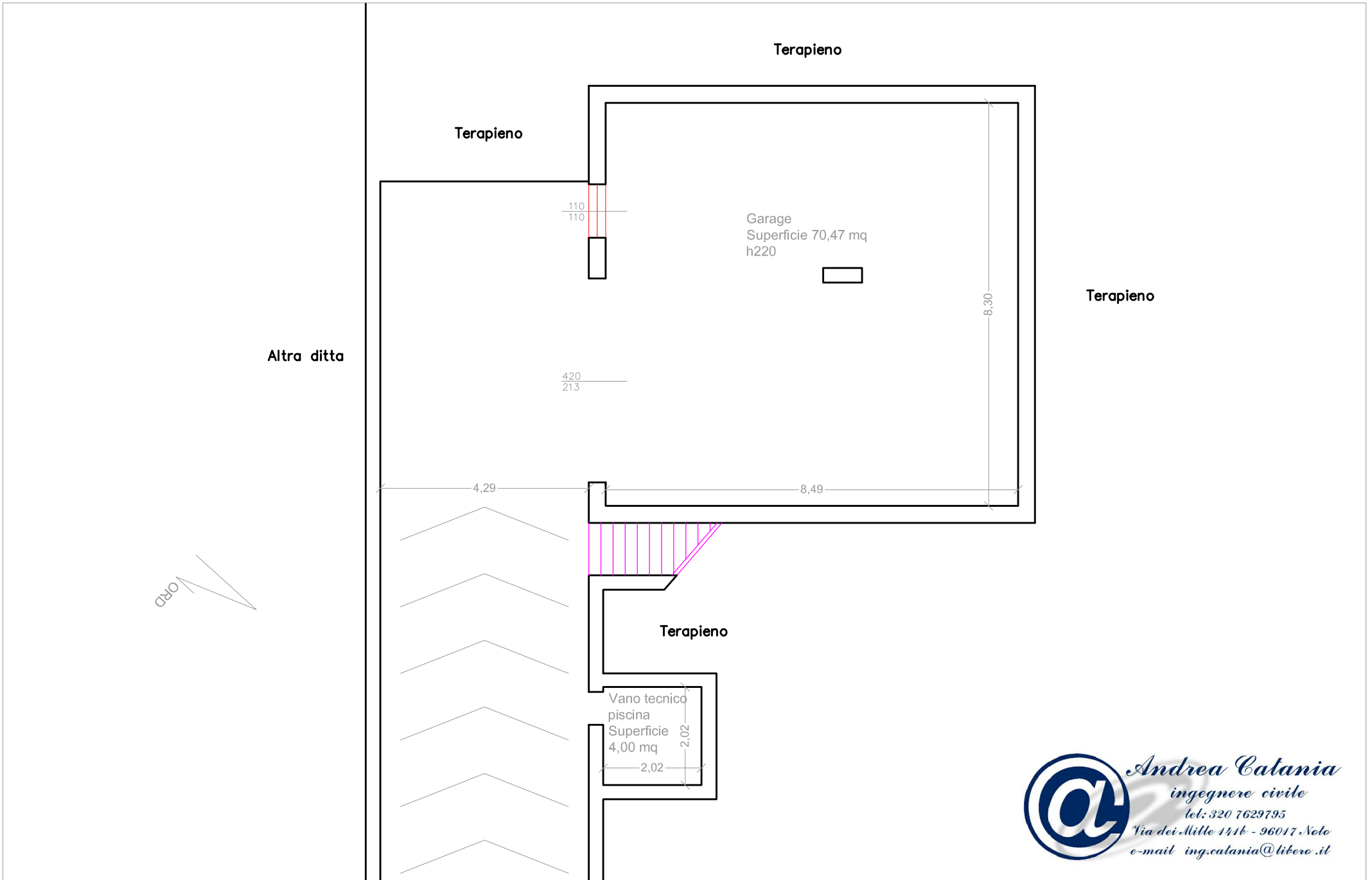
-  Immobile principale
-  Tettoia
-  Piscina
-  Superficie pavimentata
-  Terreno vegetale

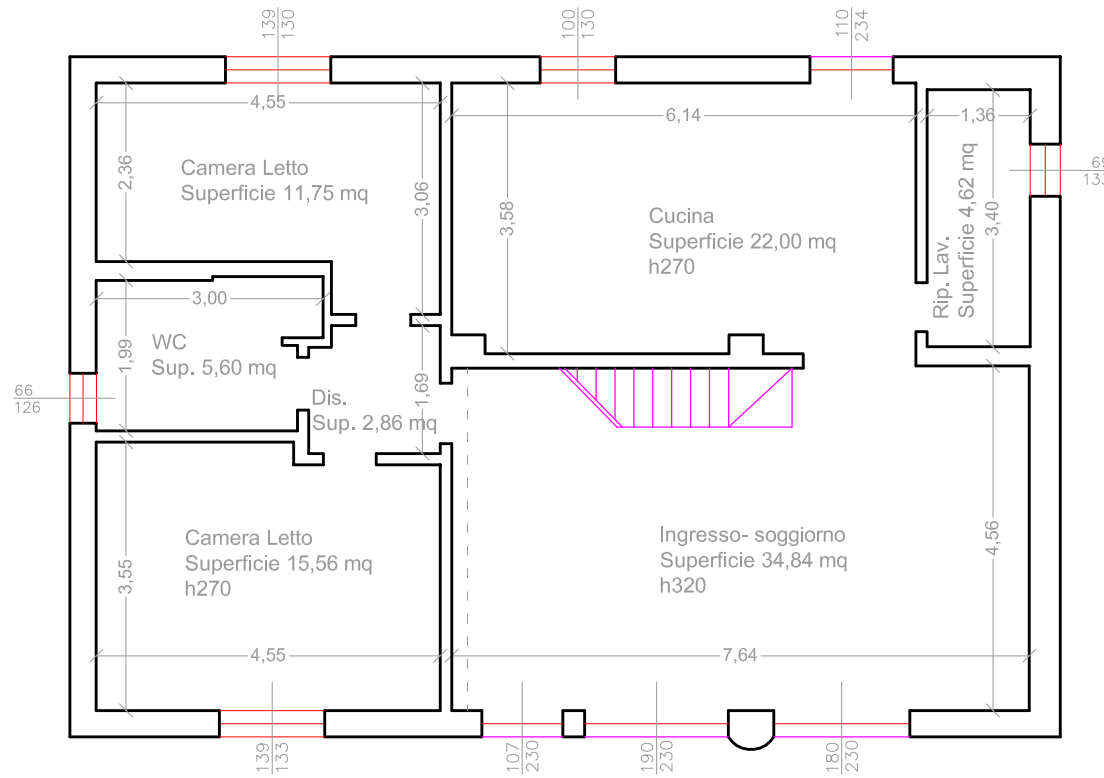
Ingresso carrabile

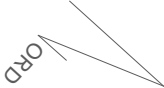
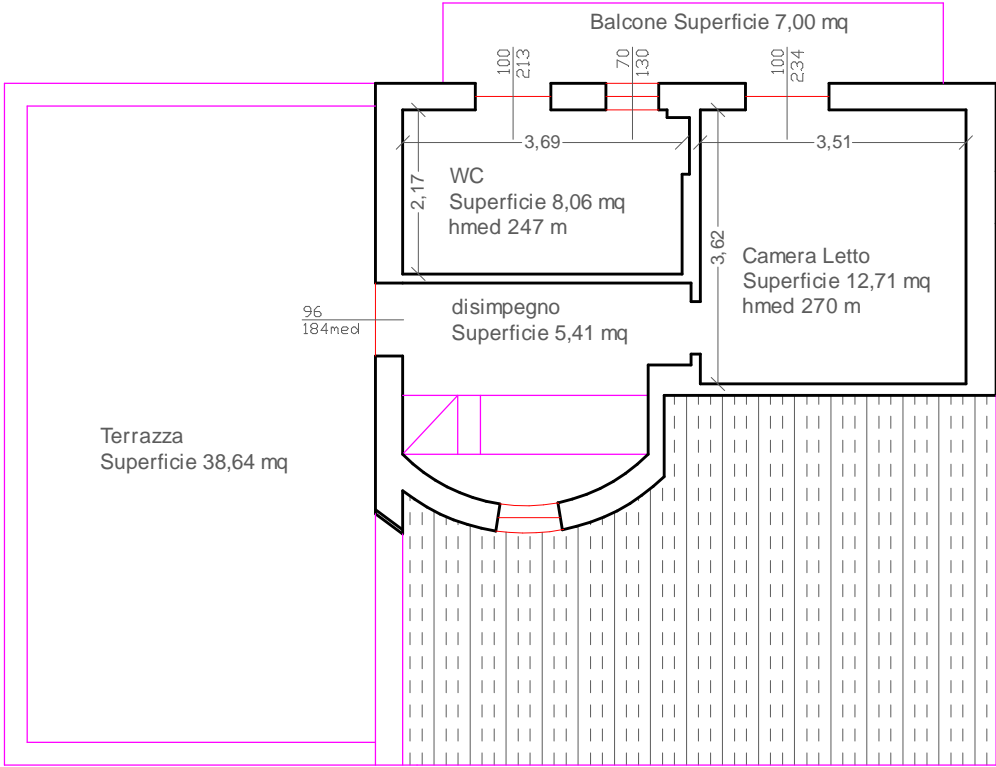
Ingresso pedonale



*Andrea Catania*  
ingegnere civile  
tel: 320 7629795  
Via dei Mille 1416 - 96017 Noto  
e-mail [ing.catania@libero.it](mailto:ing.catania@libero.it)







Piscina - tettoia

Scala 1:100

