

DOCUMENTAZIONE FOTOGRAFICA

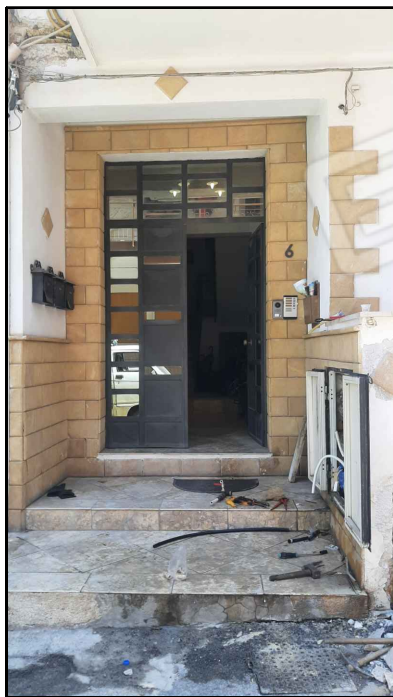


*Prospetto - ingresso*

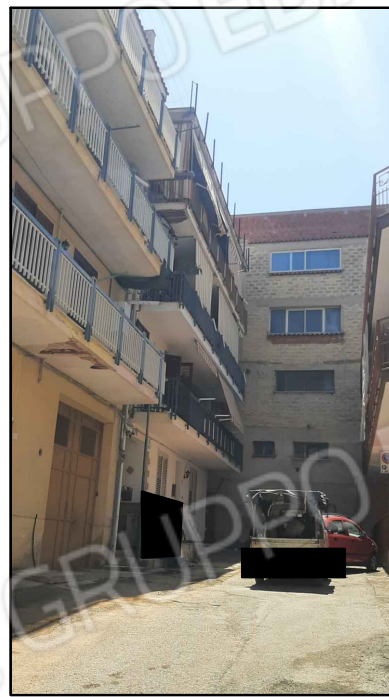


*prospetto su via Francesco Lanza*

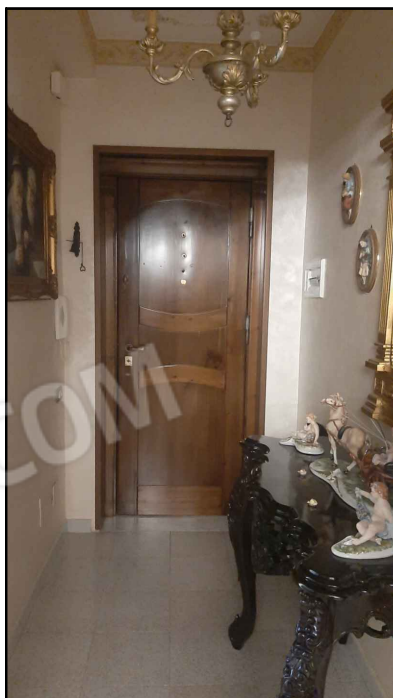
DOCUMENTAZIONE FOTOGRAFICA



*Portone d'ingresso all'edificio*



*prospetto su via Francesco Lanza*



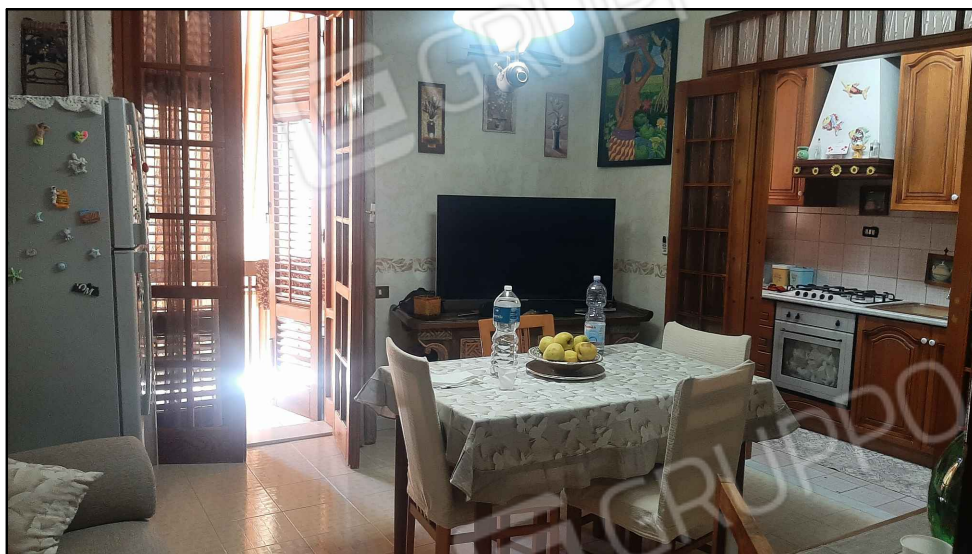
*Porta d'ingresso*



*Disimpegno*



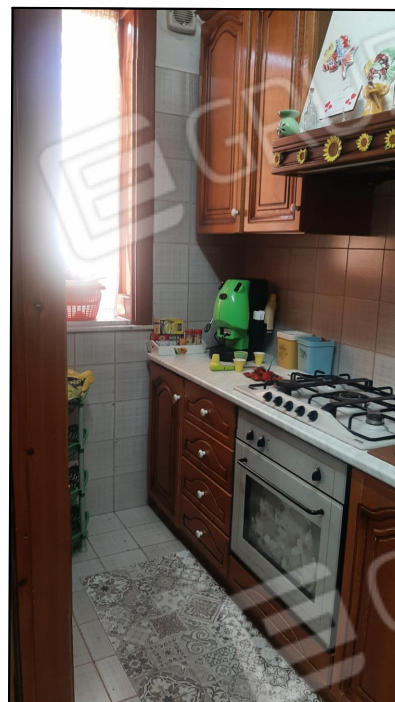
DOCUMENTAZIONE FOTOGRAFICA  
BENE 1



*soggiorno*



*ingresso*



*cucina*

DOCUMENTAZIONE FOTOGRAFICA  
BENE 1



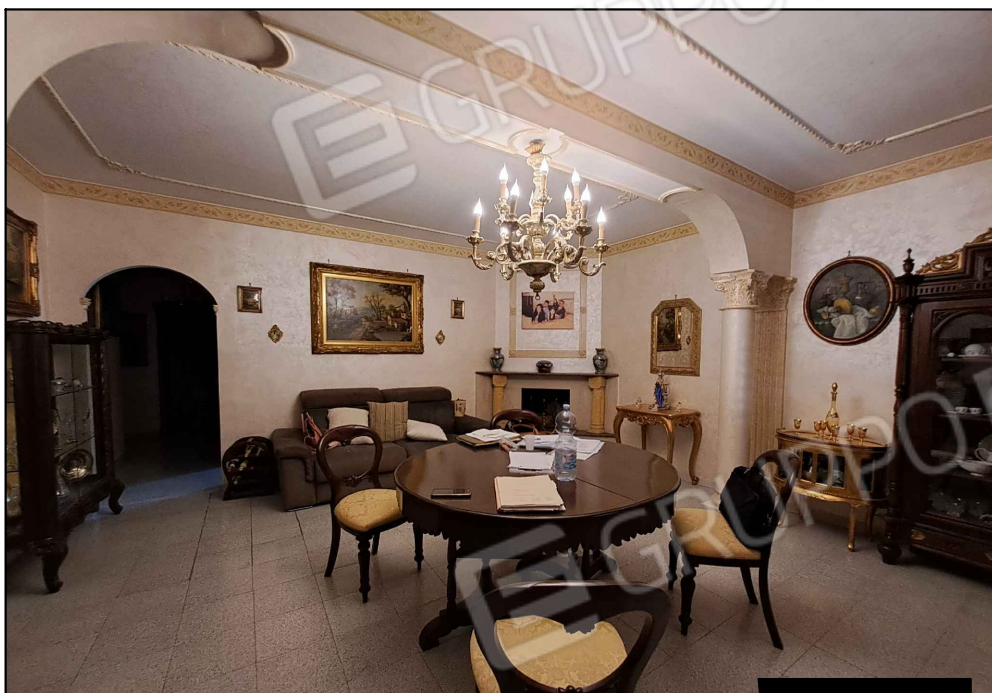
camera da letto



cameretta



DOCUMENTAZIONE FOTOGRAFICA  
BENE 1



salotto - soggiorno

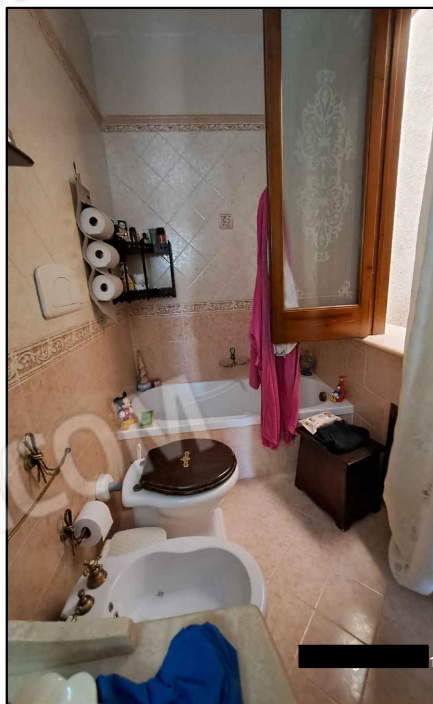


salotto - soggiorno

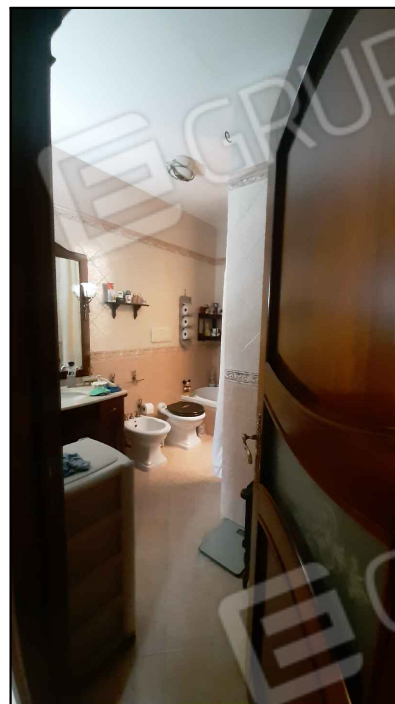
DOCUMENTAZIONE FOTOGRAFICA  
BENE 1



*bagno*



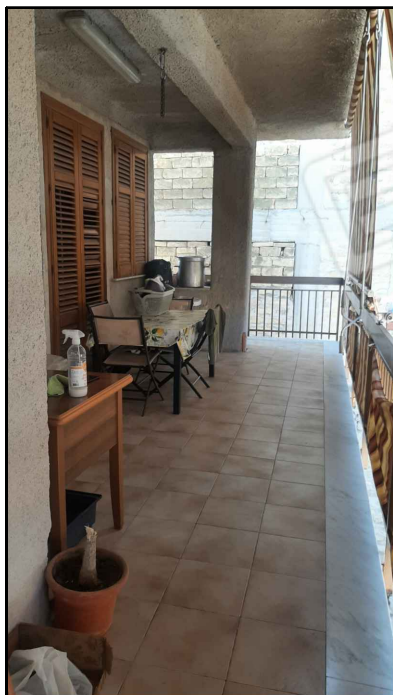
*bagno*



*bagno*



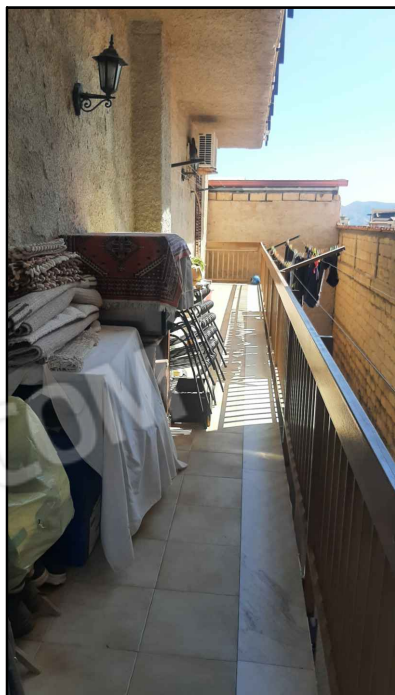
DOCUMENTAZIONE FOTOGRAFICA  
BENE 1



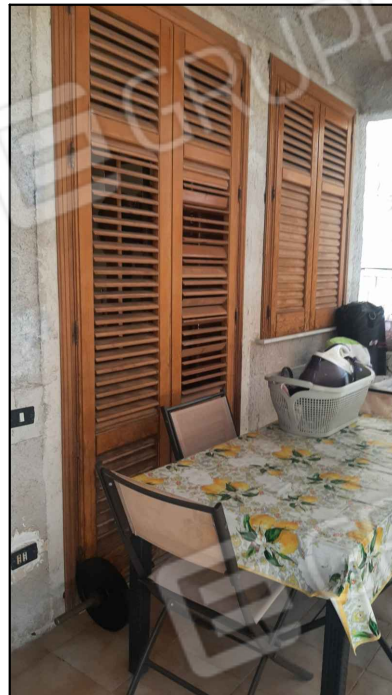
*balcone su via F. Lanza*



*balcone su via F. Lanza*

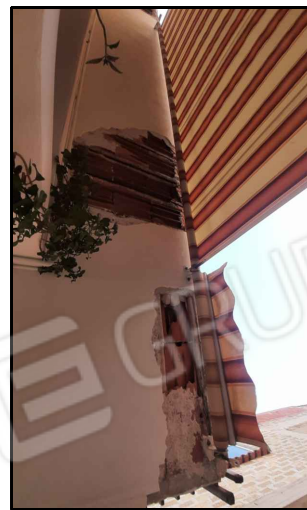


*balcone su stradina laterale*



*balcone su via F. Lanza*

DOCUMENTAZIONE FOTOGRAFICA  
BENE 1



*parte sottostante il balcone su via F. Lanza*



*parte di pavimentazione del soggiorno e di una parete*



DOCUMENTAZIONE FOTOGRAFICA  
BENE 2



*Locale da sgombero*

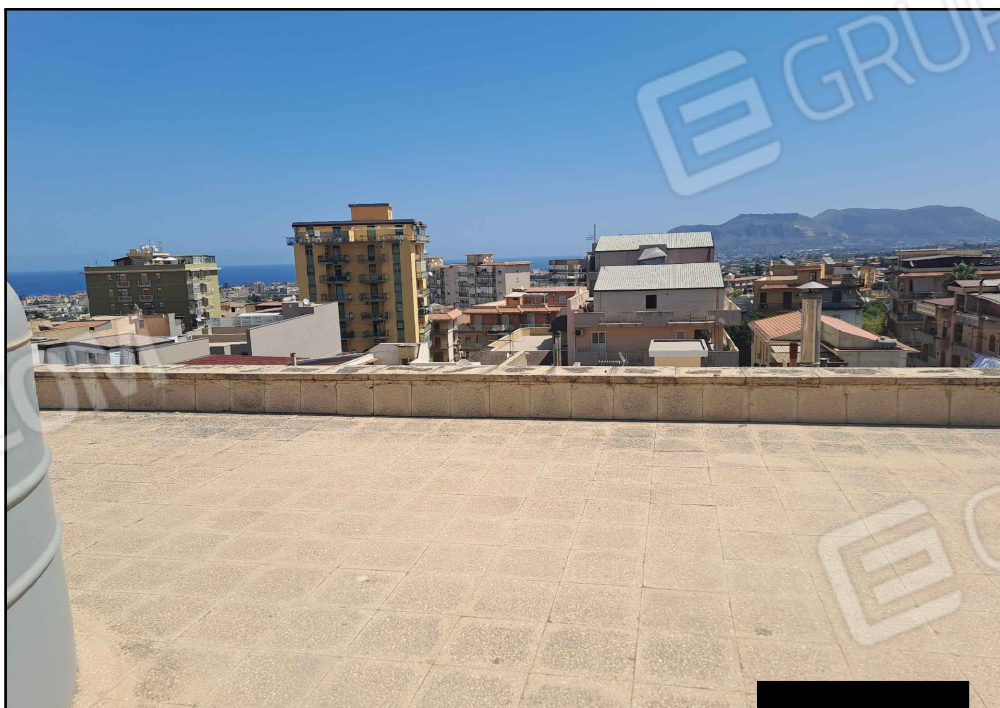


*Locale da sgombero*

DOCUMENTAZIONE FOTOGRAFICA  
BENE 2



*ingresso al terrazzo comune*



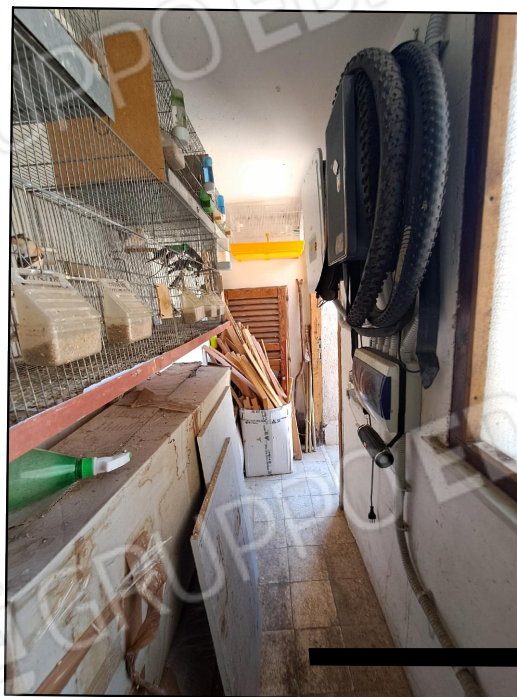
*terrazzo comune*



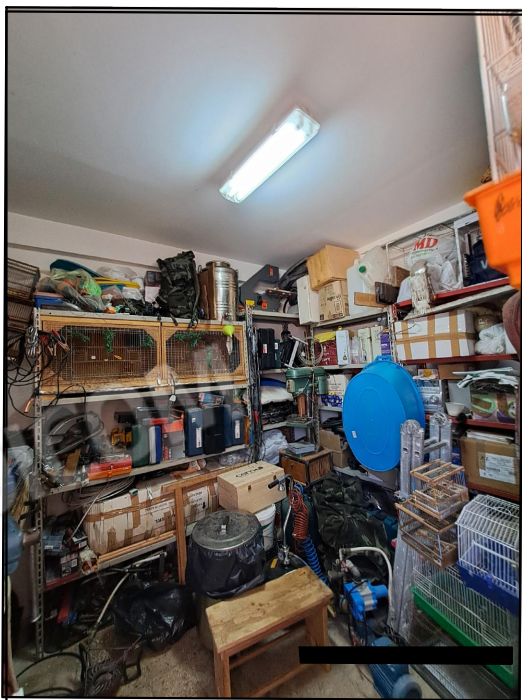
DOCUMENTAZIONE FOTOGRAFICA  
BENE 2



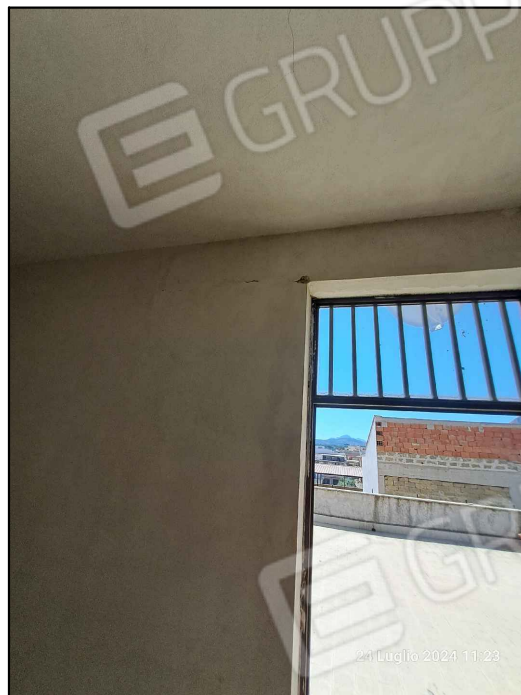
*ingresso al locale da sgombero*



*Locale da sgombero*



*Locale da sgombero*



*vista dalla scala di accesso*