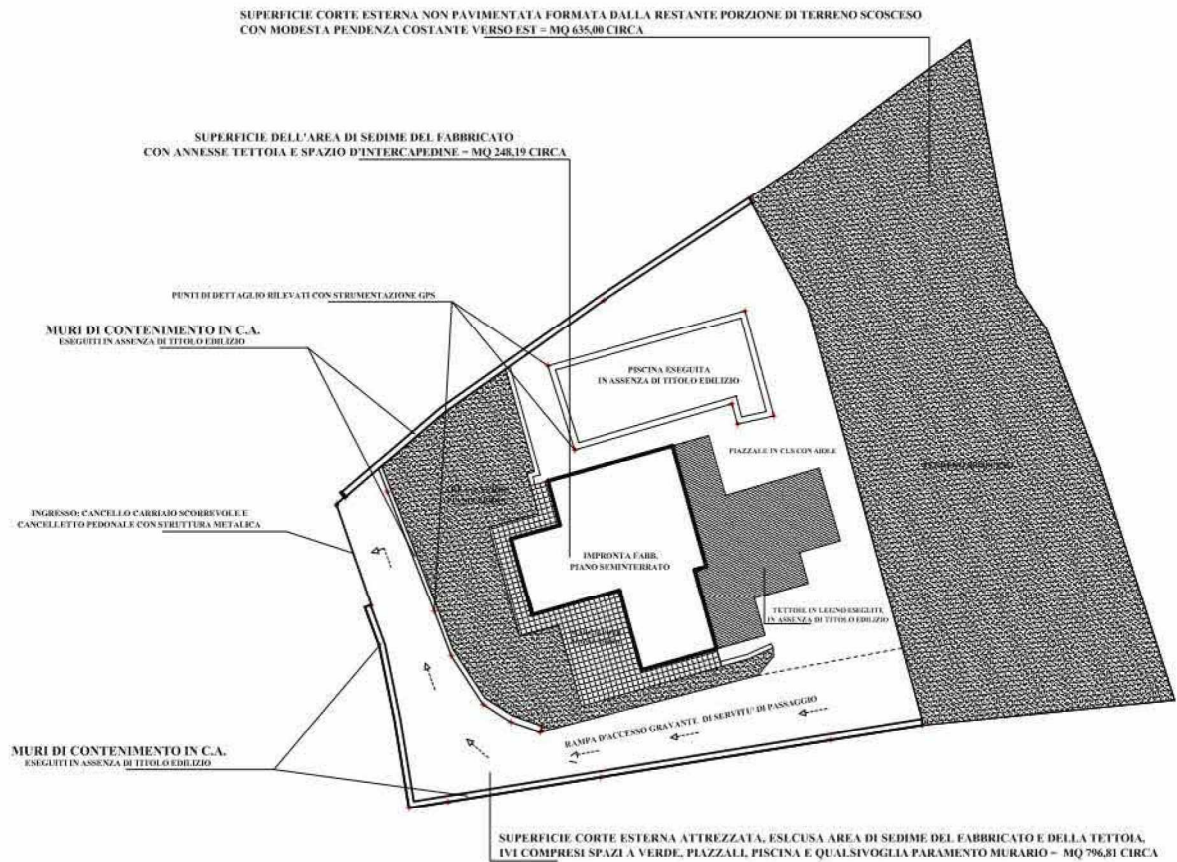


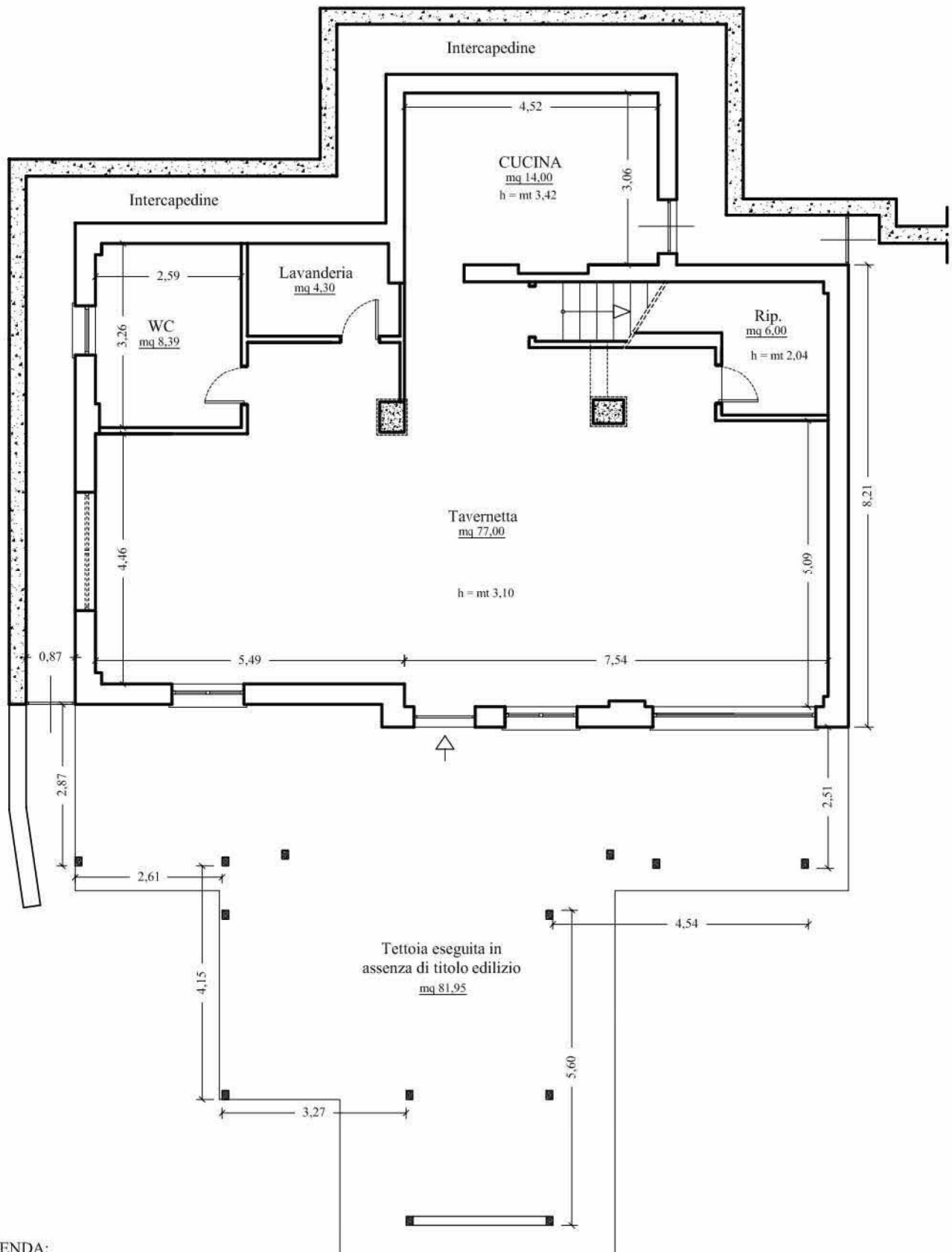
TRIBUNALE DI COSENZA - C.T.U. NELLA PROCED. DI ESPROP. IMM. N. 360/2014 R.G.E.

RILIEVO METRICO E TOPOGRAFICO DELLO STATO DI FATTO DELL'INTERO COMPENDIO IMMOBILIARE
- SCALA 1:500 -

TOTALE SUPERFICIE PARTICELLA 885 DI NATURA CATASTALE ENTE URBANO = MQ 1.680,00



PIANTA PIANO SEMINTERRATO



LEGENDA:

Sup. lorda piano seminterrato = **mq 132,34**

Sup. lorda tettoia = **mq 81,95**

Sup. lorda intercapedine = **mq 34,00**

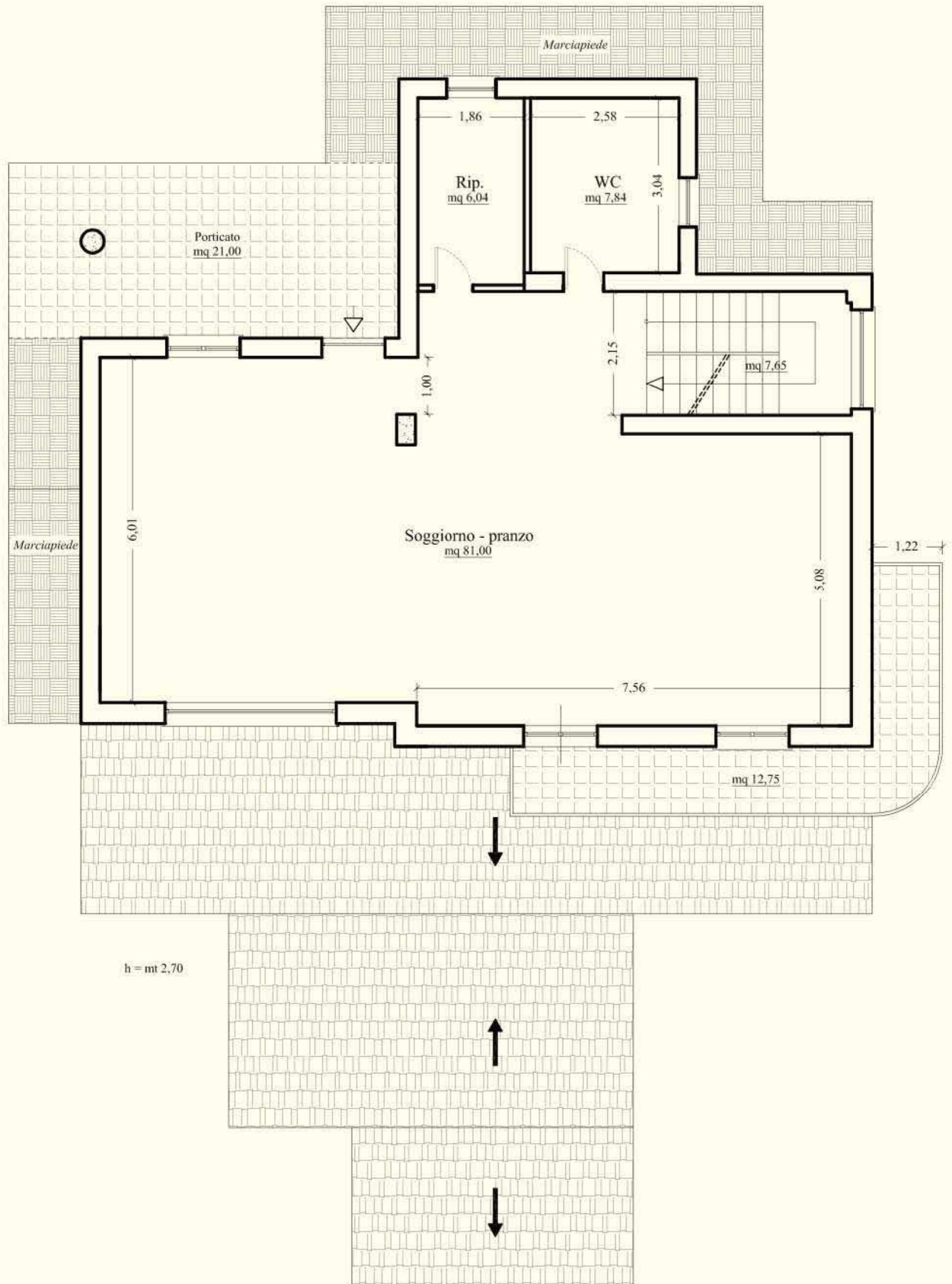
Tot. sup. commerciale = (50% sup. lorda piano S1 + 35% sup. tettoia + 25% sup. intercapedine) **mq 103,35**

H utile = mt. 3,10

Sup. interna netta calpestabile = **mq 105,73**



PIANTA PIANO TERRA



LEGENDA:

Sup. lorda piano terra = **mq 122,12**

Sup. porticato = **mq 21,00** e balcone = **mq 12,75**

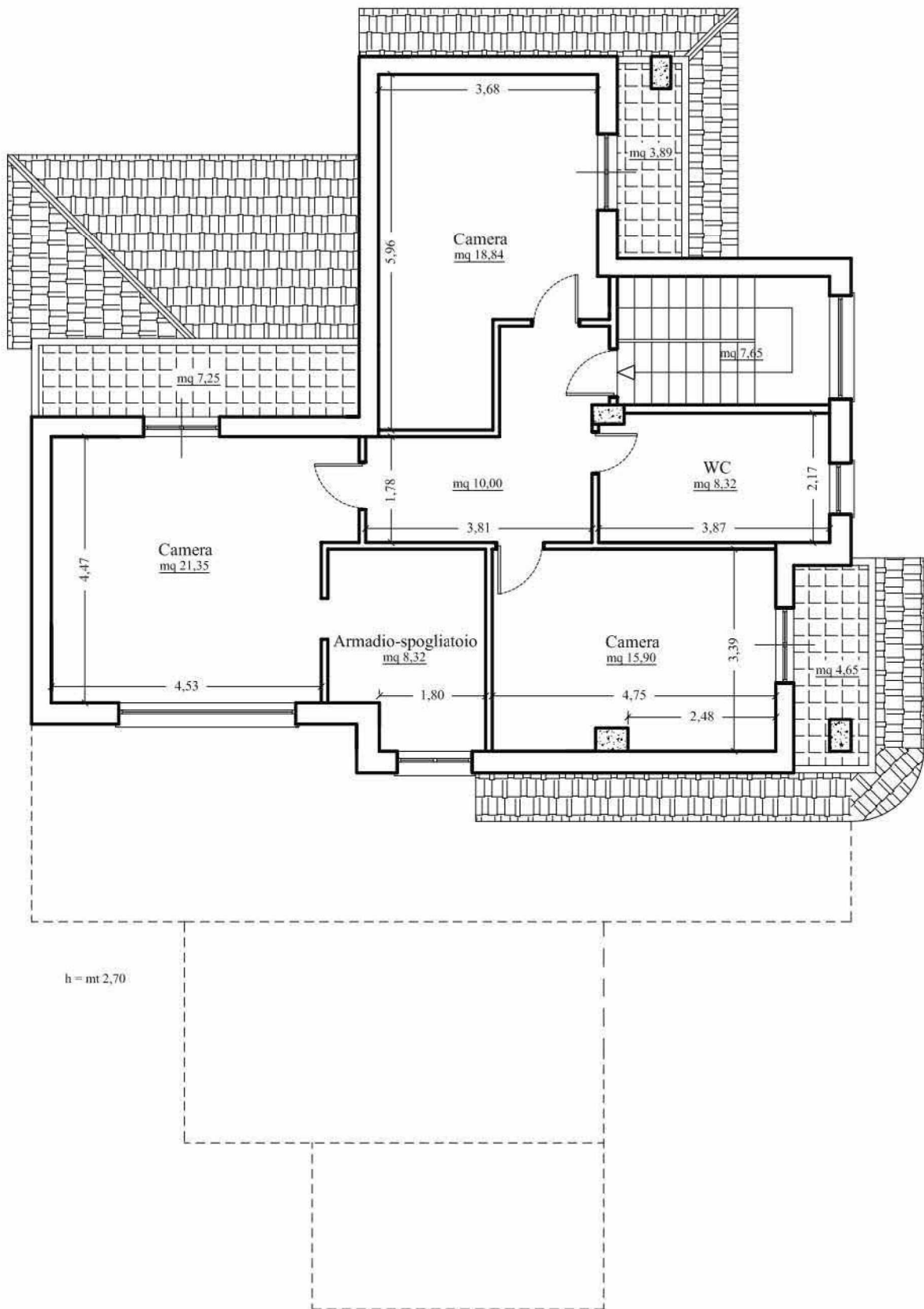
Tot. sup. commerciale = (100% sup. lorda piano terra + 35% sup. porticato e + 25% sup. balconi) **mq 132,66**

H utile = mt. 2,70

Sup. interna netta calpestabile (ivi compresa scala) = **mq. 102,53**



PIANTA PIANO PRIMO



LEGENDA:

Sup. lorda piano terra = **mq 110,92**

Sup. balconi/aggetti = **mq 15,79**

Tot. sup. commerciale = (100% sup. lorda piano primo + 25% sup. balconi) **mq 114,86**

H utile = mt. 2,70

Sup. interna netta calpestabile (ivi compresa scala) = **mq 90,38**

