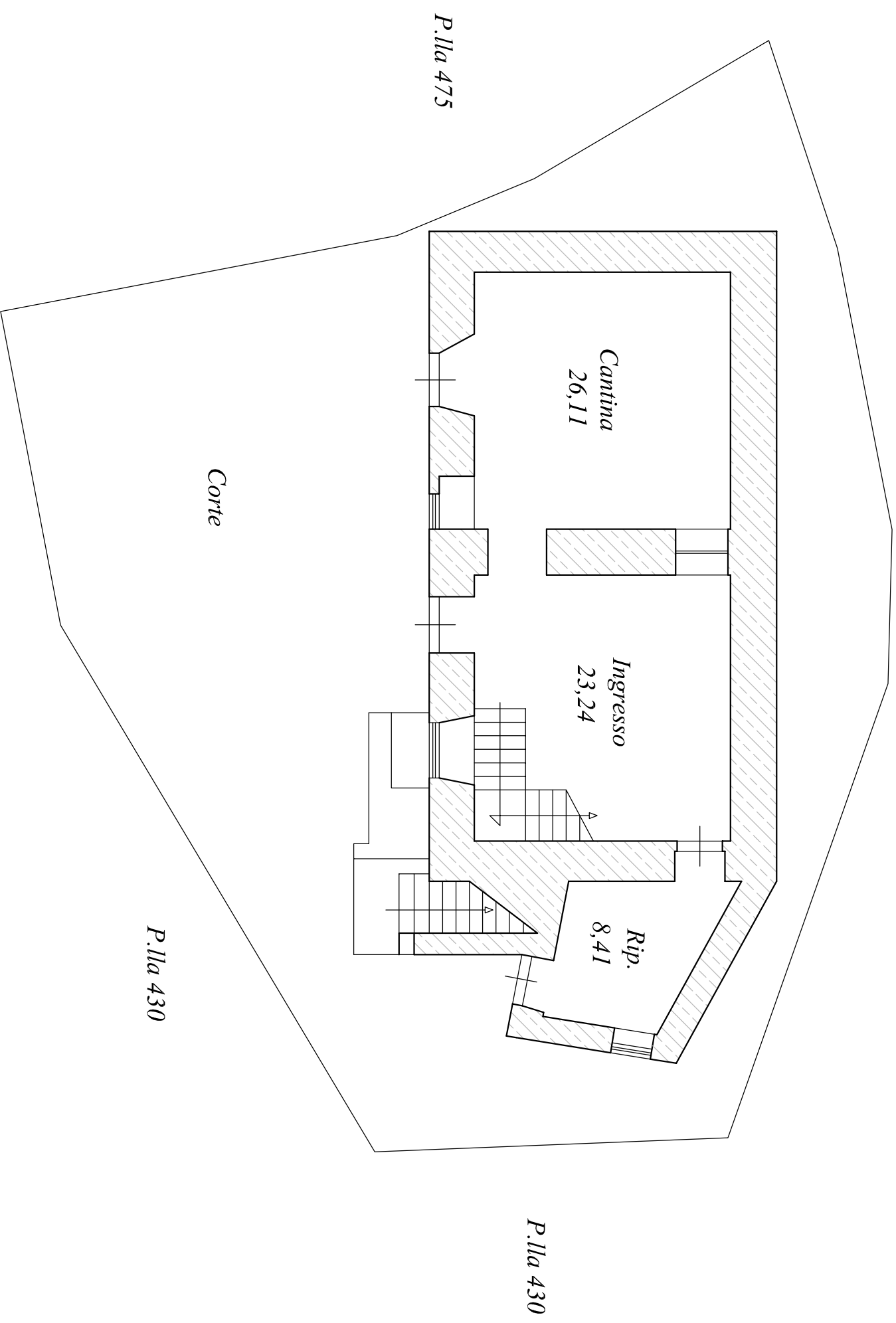


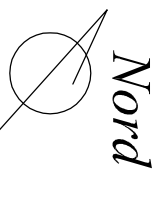
Piano Terra

H = mt. 3,10

Superficie Lorda mq. 106,83



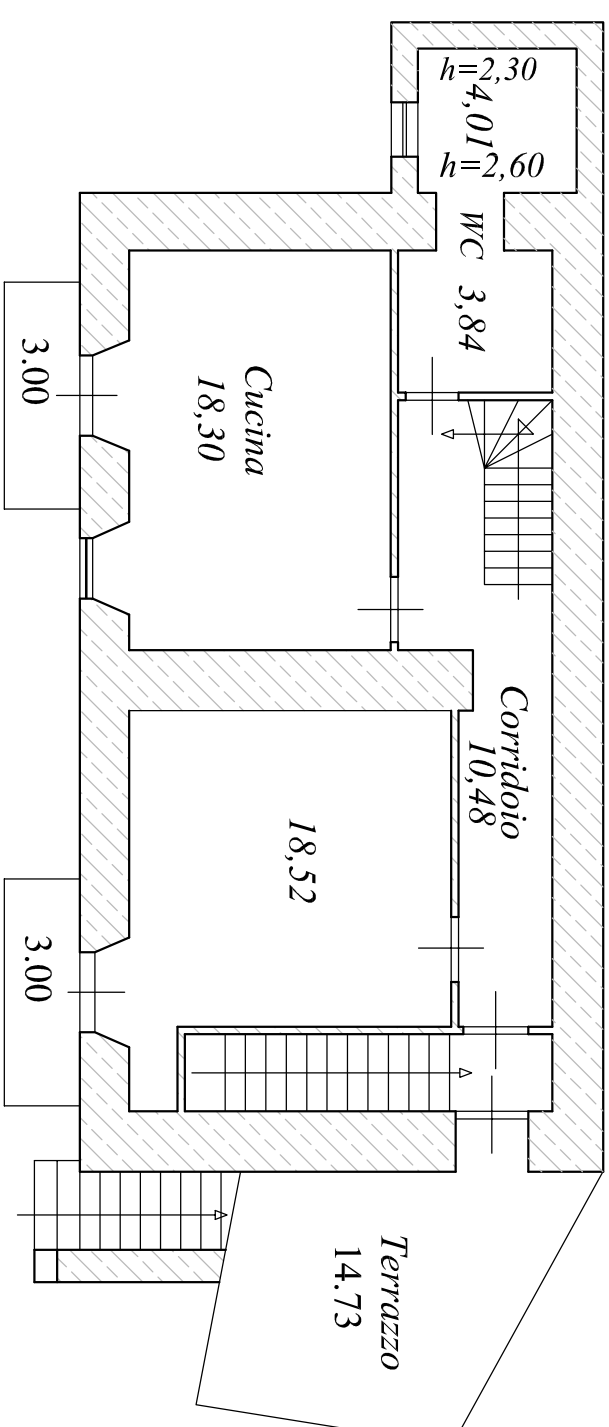
Scala 1:100



Piano Primo

$H = mt. 2,85$

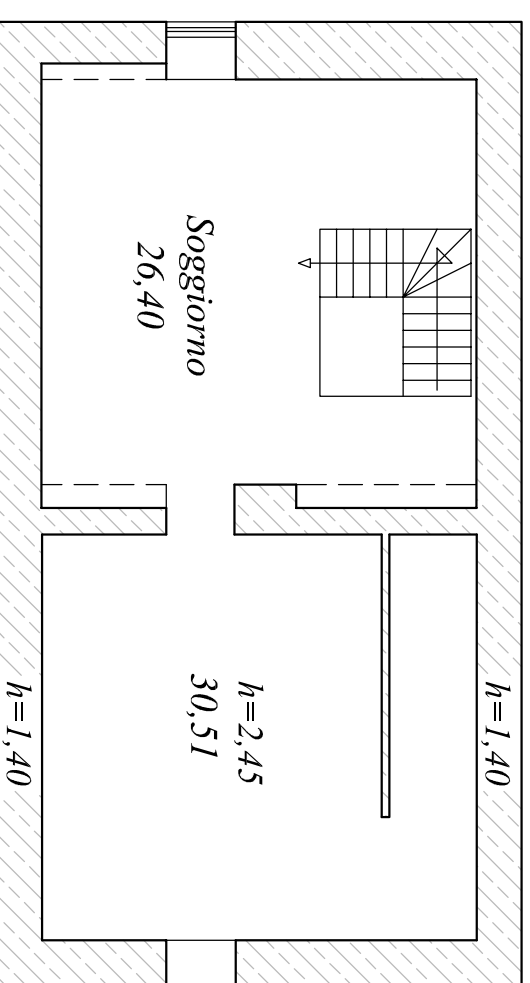
Superficie Lorda mq. 95.94



Piano Secondo

$H = mt. 1,93$

Superficie Lorda mq. 89.61



Superficie Totale Utile..... mq. 57,76 (PT)

Superficie Totale Utile..... mq. 55,15 (P1)

Superficie Totale Utile..... mq. 56,91 (P2)

Totale Superficie Utile..... mq. 169,82

Superficie Lorda tot mq. 292.38

Scala 1:100

