

TRIBUNALE DI PAOLA  
Ufficio Esecuzioni Immobiliari  
Giudice: dr. ssa Federica LAINO

---

Procedura Esecutiva Immobiliare n. 23/2018

contro

---

**ALLEGATO 10**

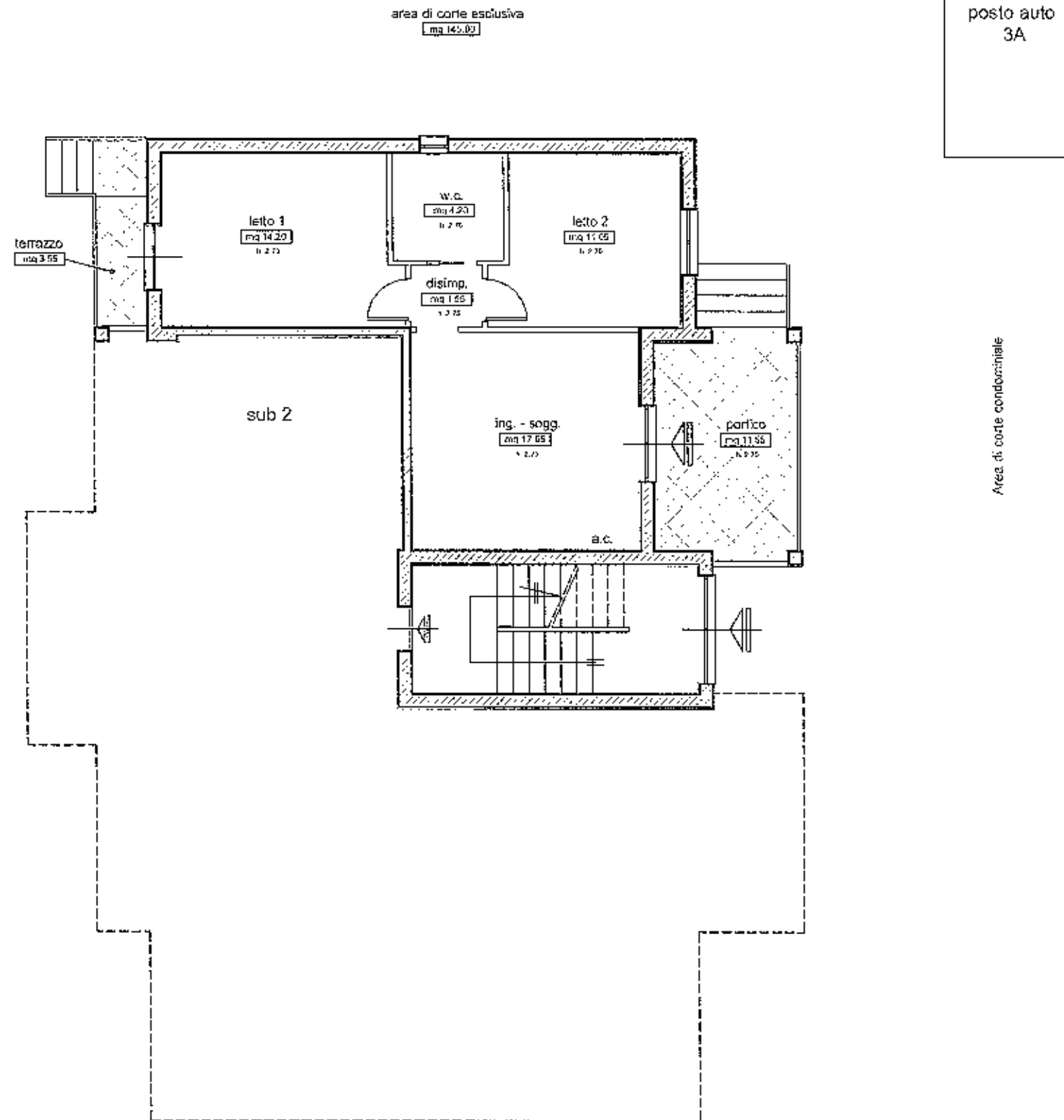
Planimetrie stato di fatto

Arch. Angelo Riente

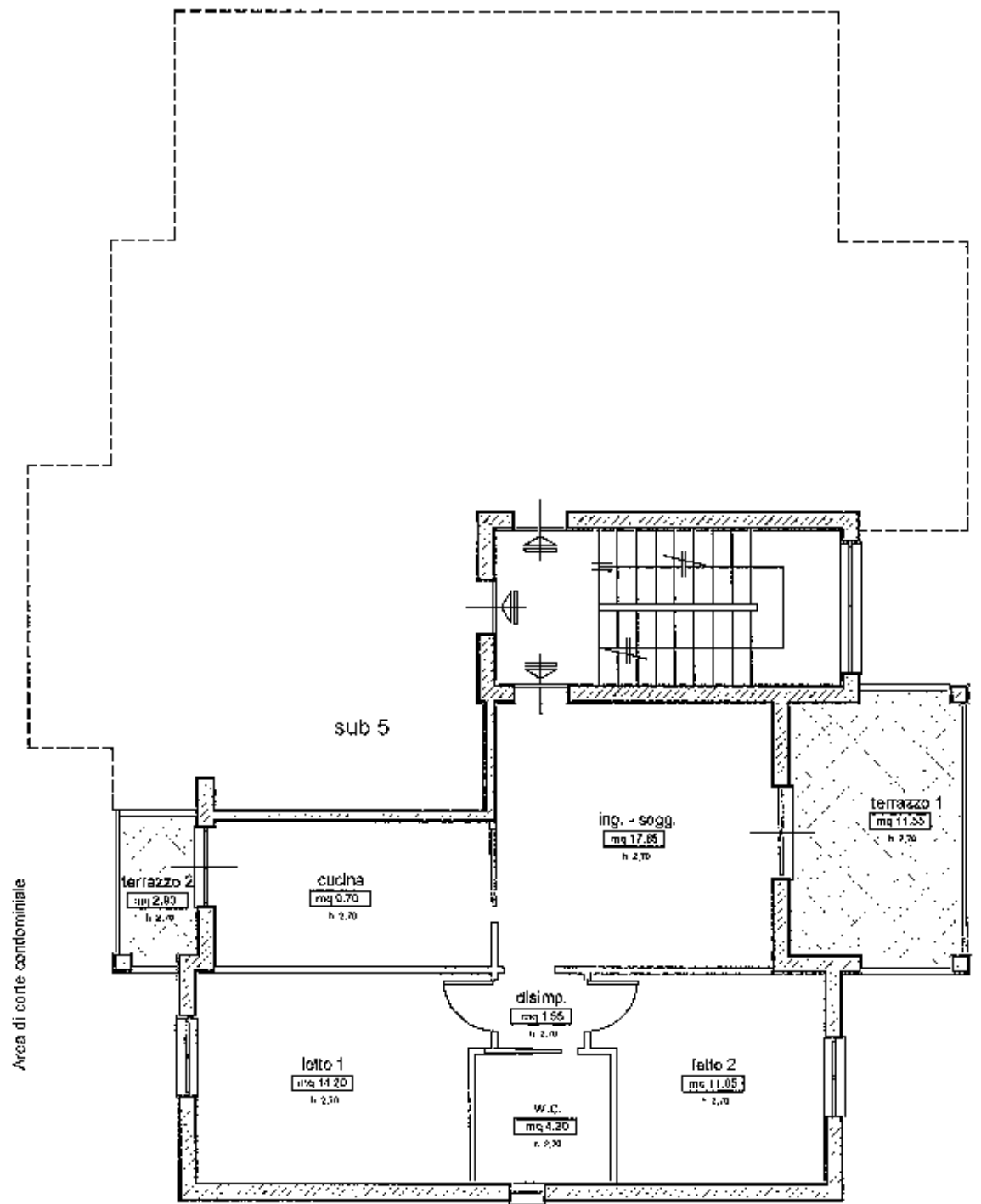
Il Consulente Tecnico d'Ufficio

(firma e timbro)





PIANTA PIANO RIALZATO  
FABB. A - INTERNO 3  
FG. 34 - P.LLA 909 - SUB. 3

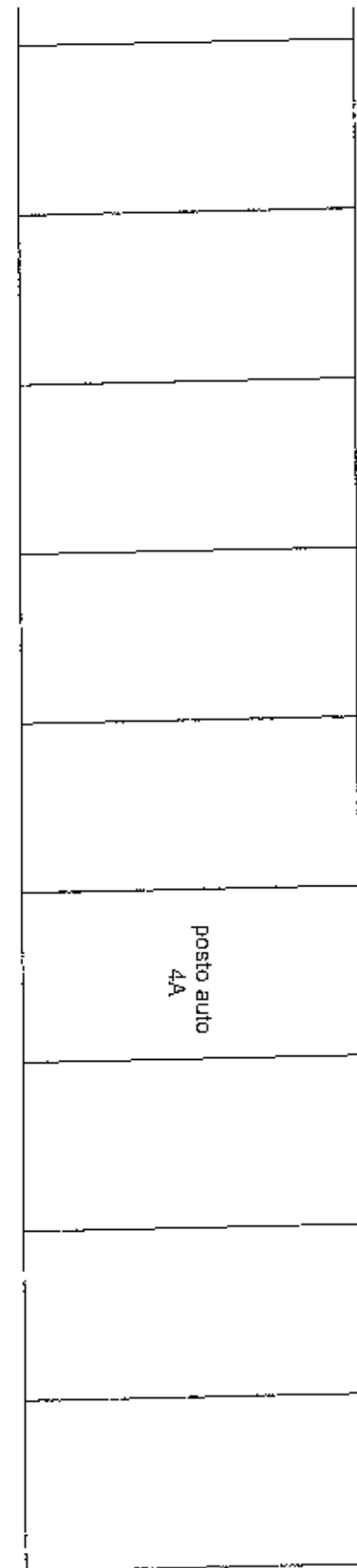


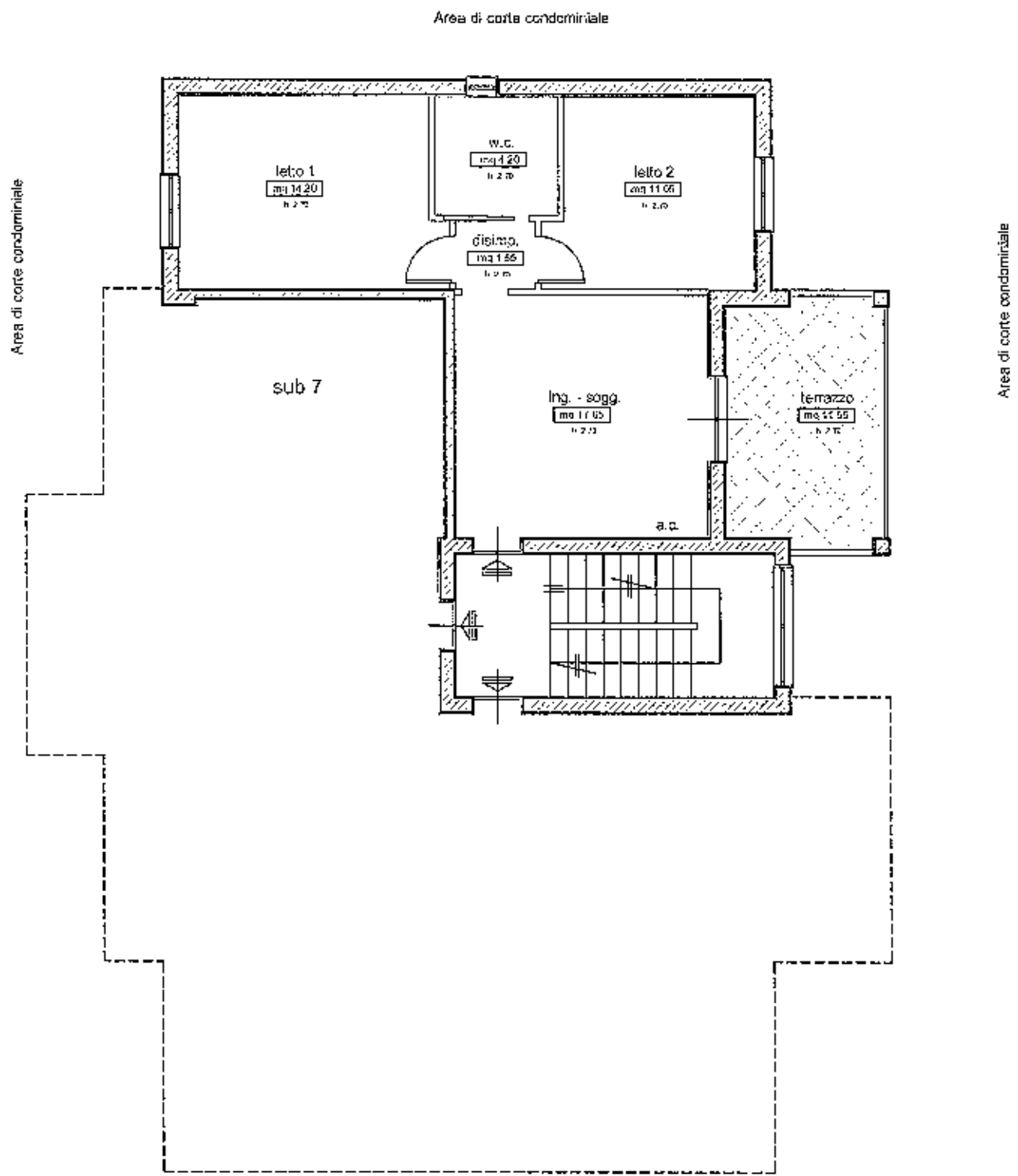
Area di corte condominiale

Area di corte condominiale

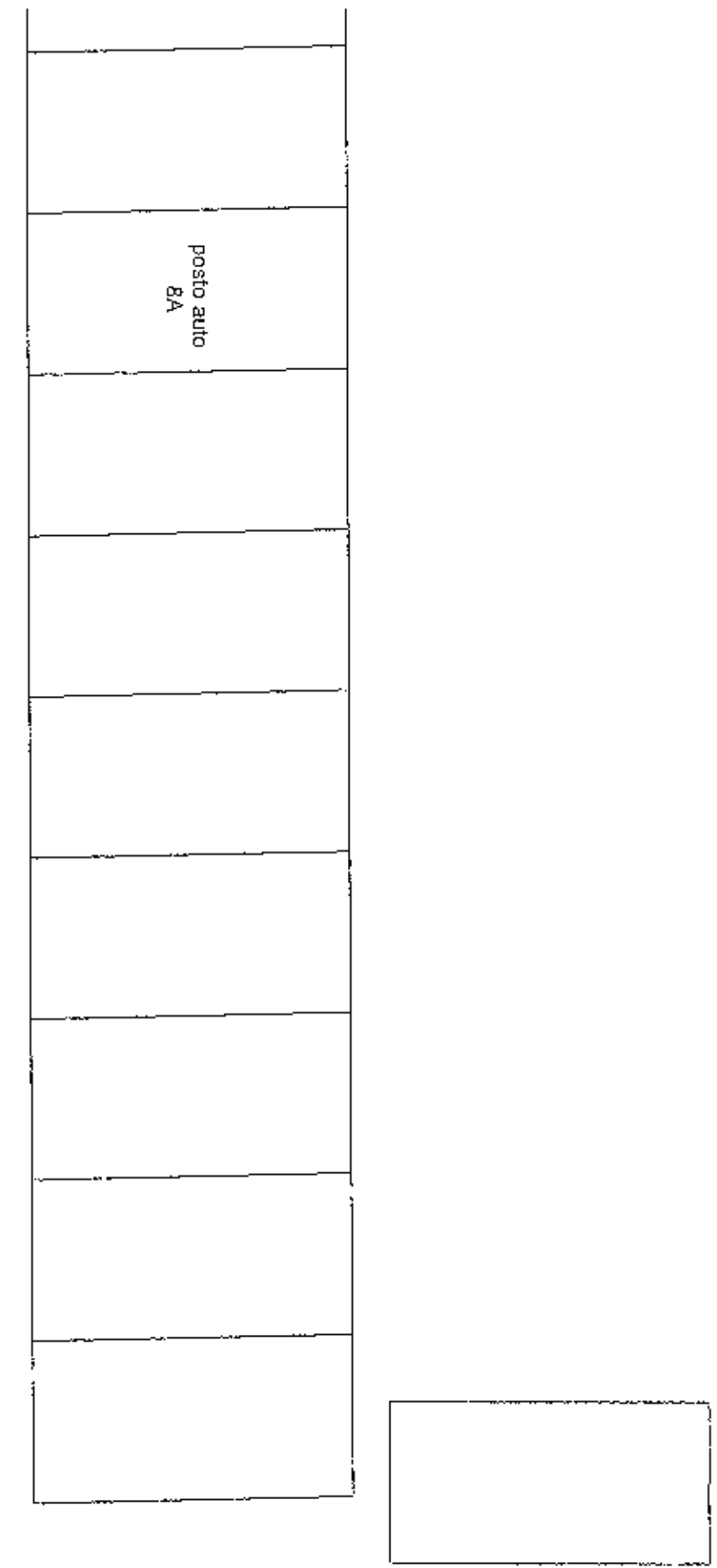


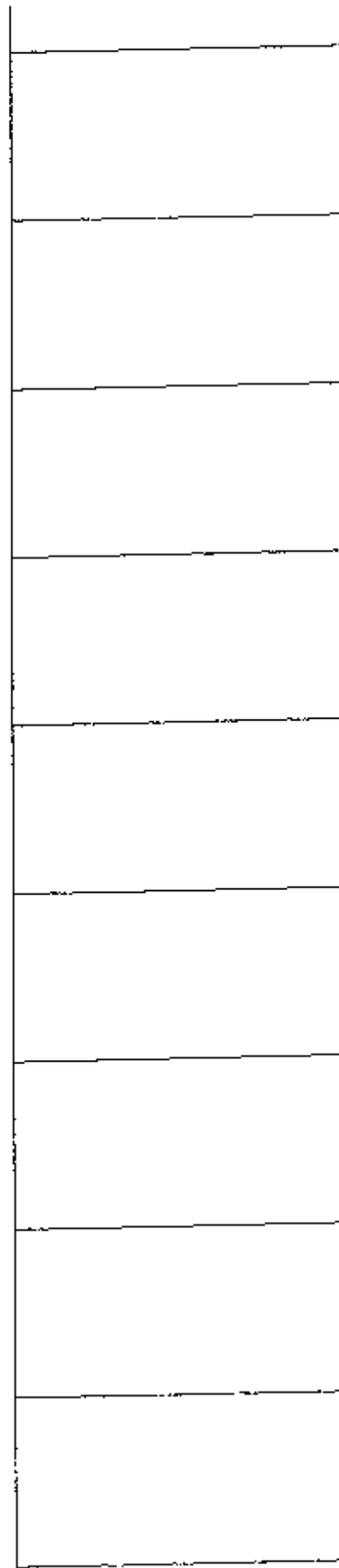
PIANTA PIANO PRIMO  
FABB. A - INTERNO 4  
FG. 34 - P.LLA 909 - SUB 4  
scala 1:100





PIANTA PIANO SECONDO  
 FABB. A - INTERNO 8  
 FG. 34 - P. LLA 909 - SUB 8  
 scala 1:100

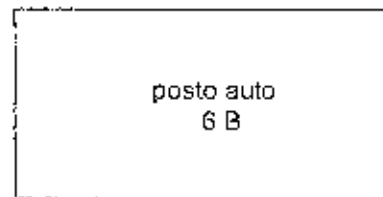
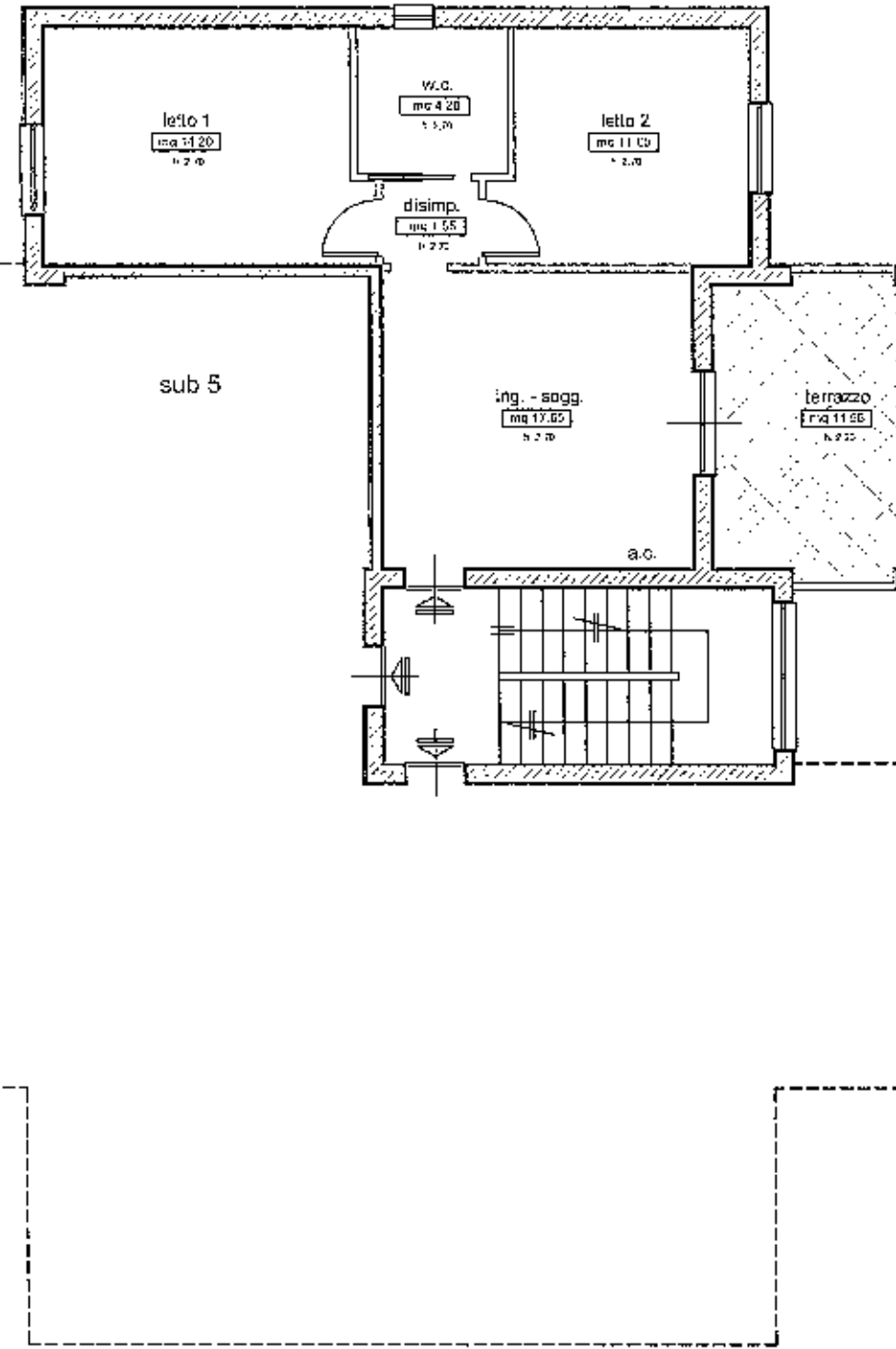




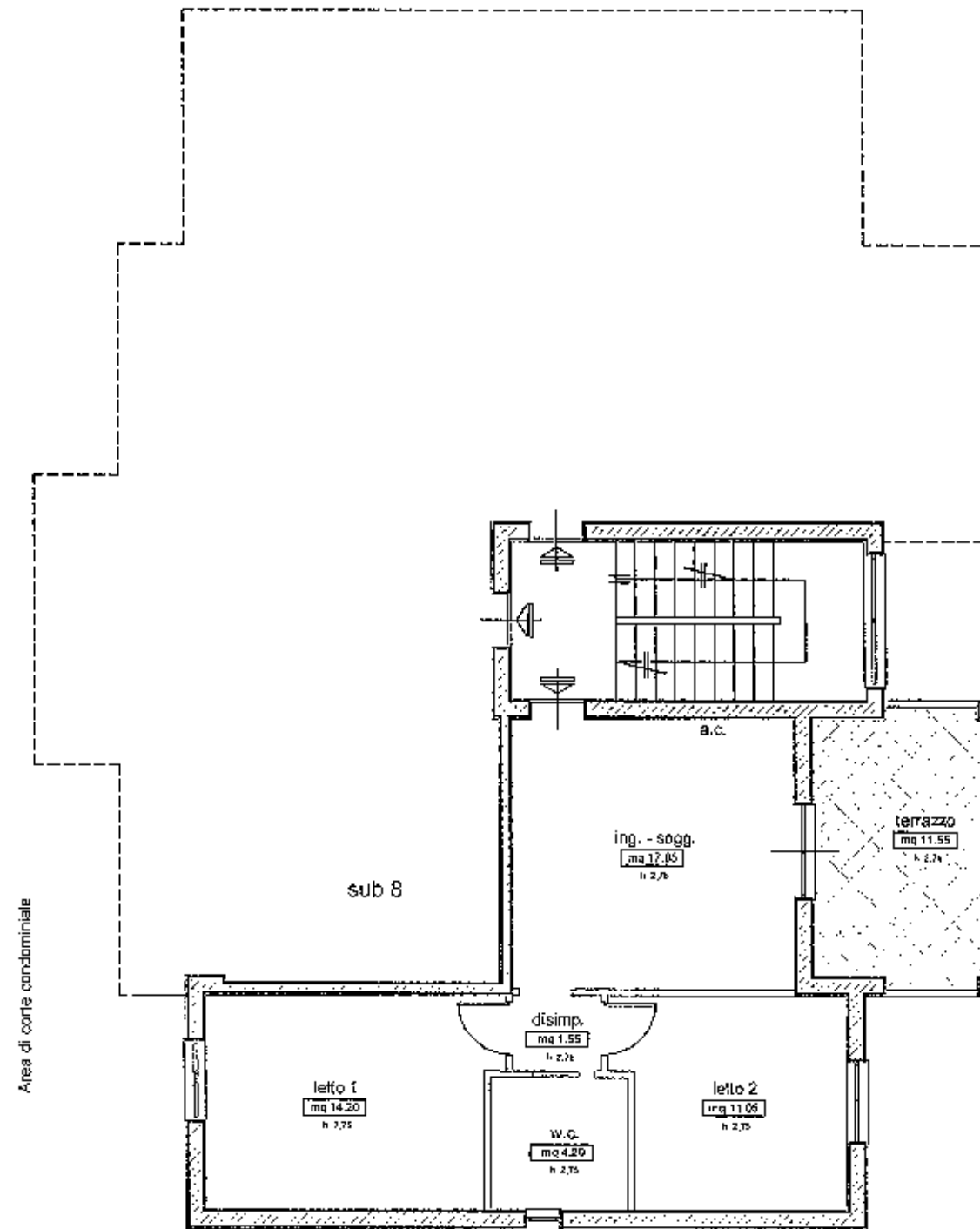
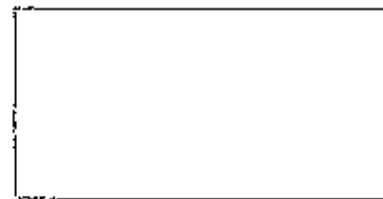
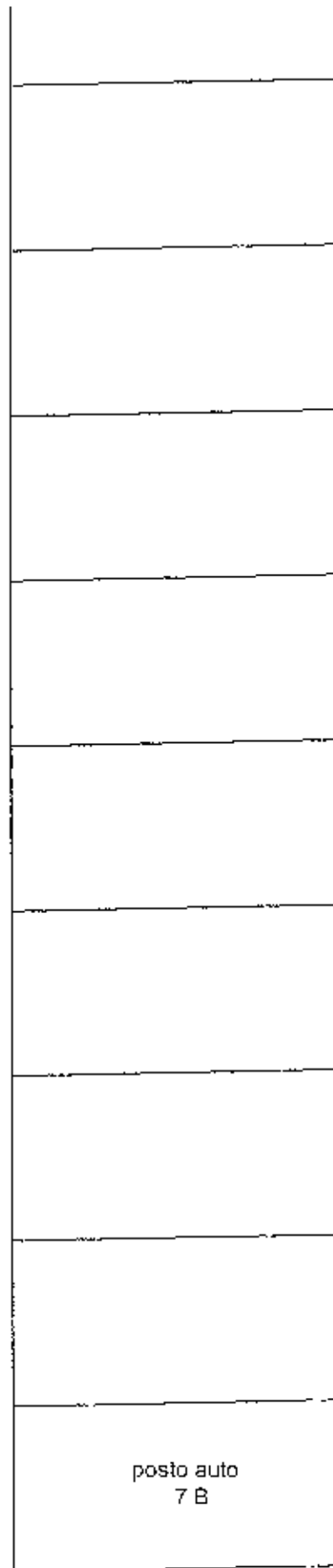
Area di corte condominiale

Area di corte condominiale

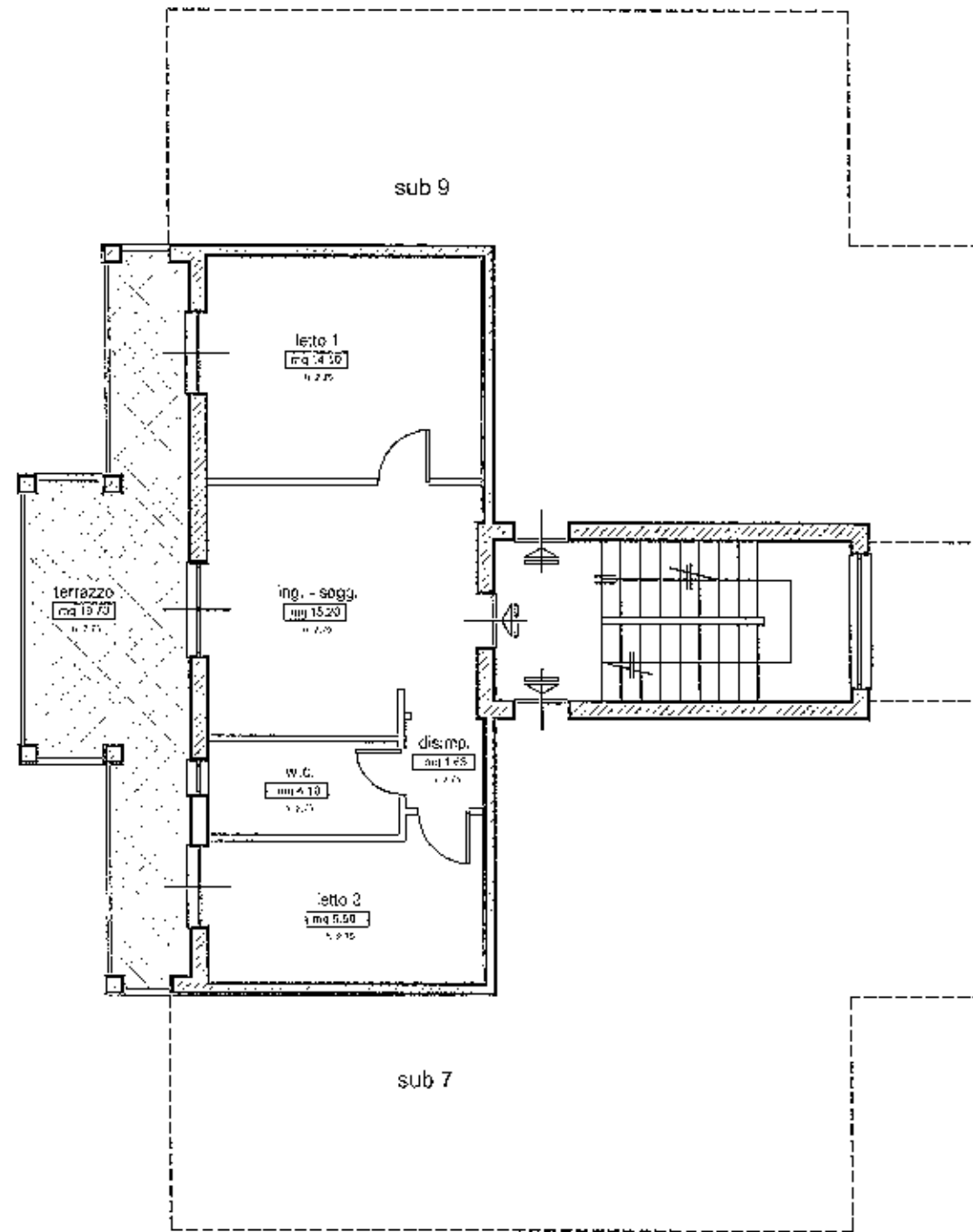
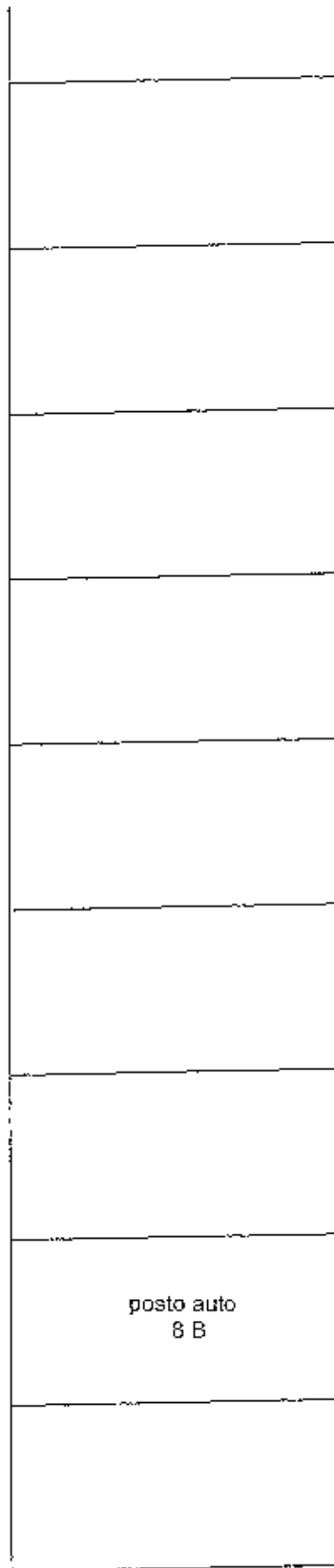
Area di corte condominiale



PIANTA PIANO PRIMO  
FABB. B - INTERNO 6  
FG. 34 - P.LLA 911 - SUB 6  
scala 1:100



PIANTA PIANO SECONDO  
FABB. B - INTERNO 7  
FG. 34 - P. LLA 911 - SUB 7  
scala 1:100



PIANTA PIANO SECONDO  
FABB. B - INTERNO 8  
EG. 34 - P.LLA 911 - SUB 8  
scala 1:100