

RILIEVO FOTOGRAFICO



Foto 1: vista satellitare - Fabbricato sito in Napoli, in via "Lago Lucrino" n. 67, Isolato 13.



Foto 2: vista satellitare 3D Nord

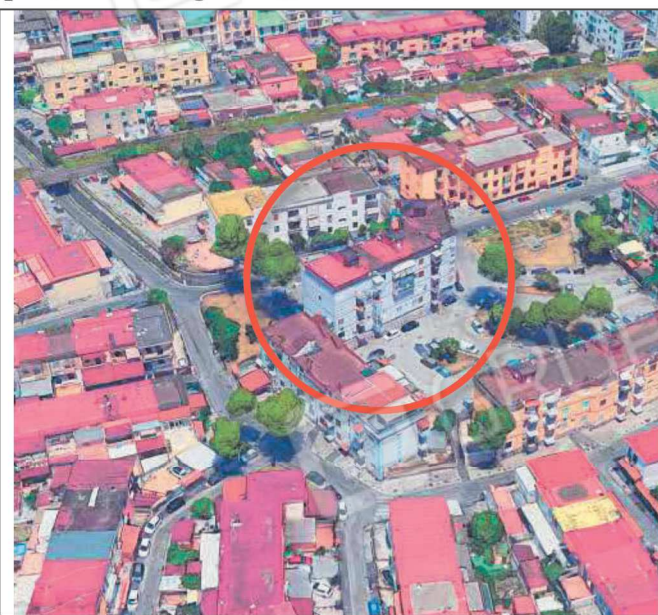


Foto 3: vista satellitare 3D Sud



Foto 4, 5: Viste fabbricato da Via Lago Lucrino



Foto 6, 7, 8, 9, 10, 11, 12, 13: viste fabbricato da Via Lago Lucrino e da slargo posteriore, ingressi scala A (civ. 63) e B (civ. 67)



Foto da 14 a 22: viste ingresso scale A (civ. 63) e B (civ. 67), androne e interno scala B, pianerottolo II° piano e ingresso appartamento

Appartamento sito in Napoli, alla via Lago Lucrino n. 67, piano secondo, scala B, int. 3.
Dati N.C.E.U.: SEZ. PON; Foglio 1; P.lla 282; Sub. 17; Cat A/3; Cons. 4 vani.

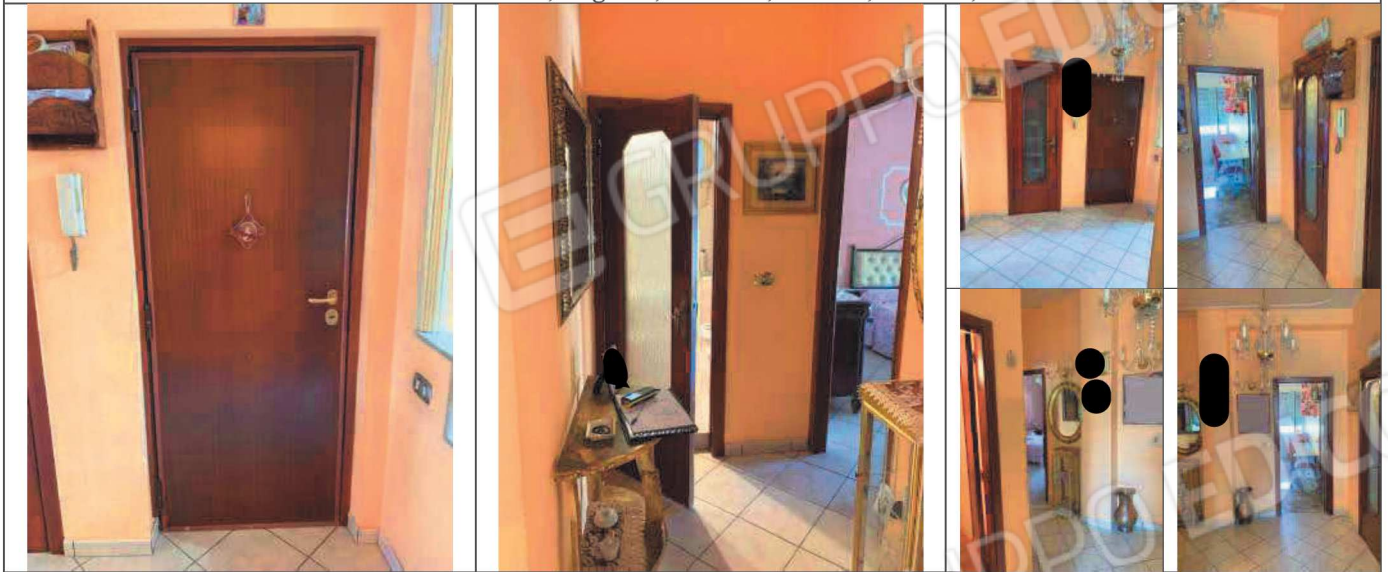


Foto 23, 24, 25, 26, 27, 28: viste ingresso-disimpegno

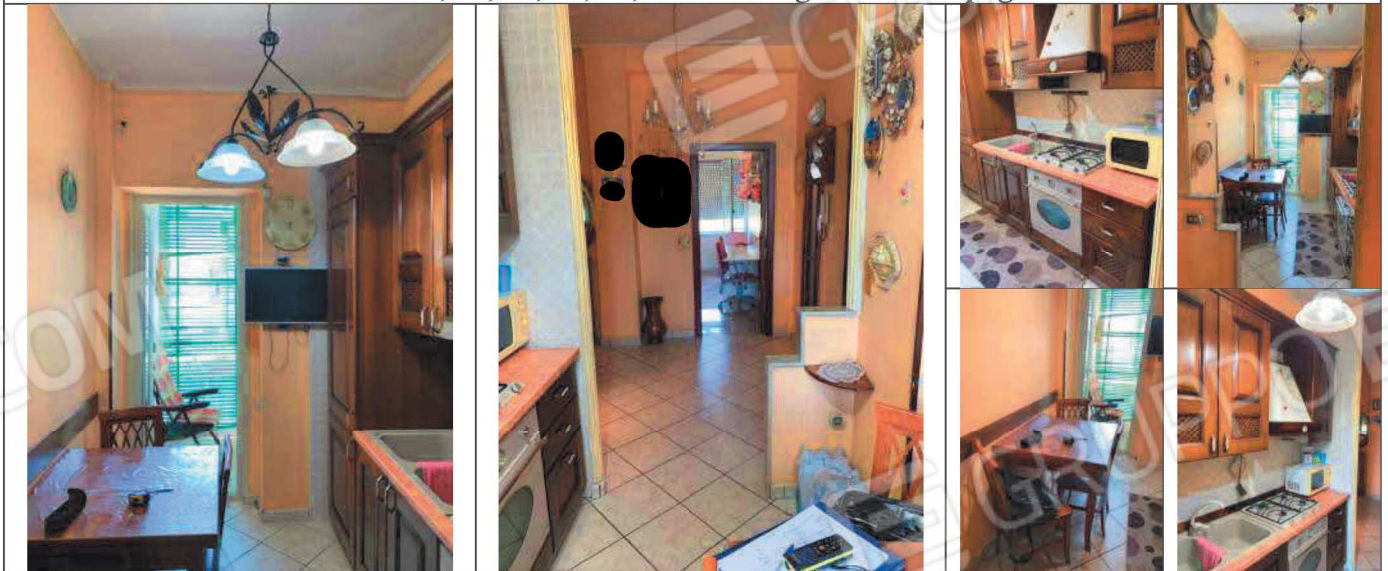


Foto 29, 30, 31, 32, 33, 34: viste cucina

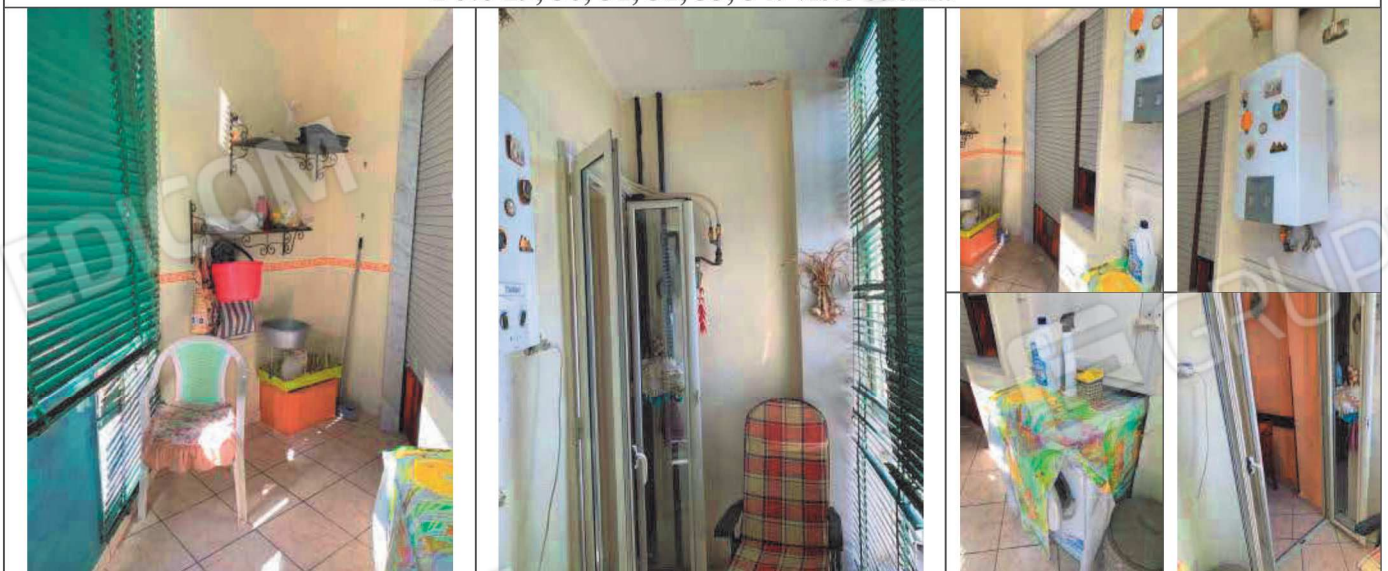


Foto 35, 36, 37, 38, 39, 40: balcone 1 - Nord/Ovest

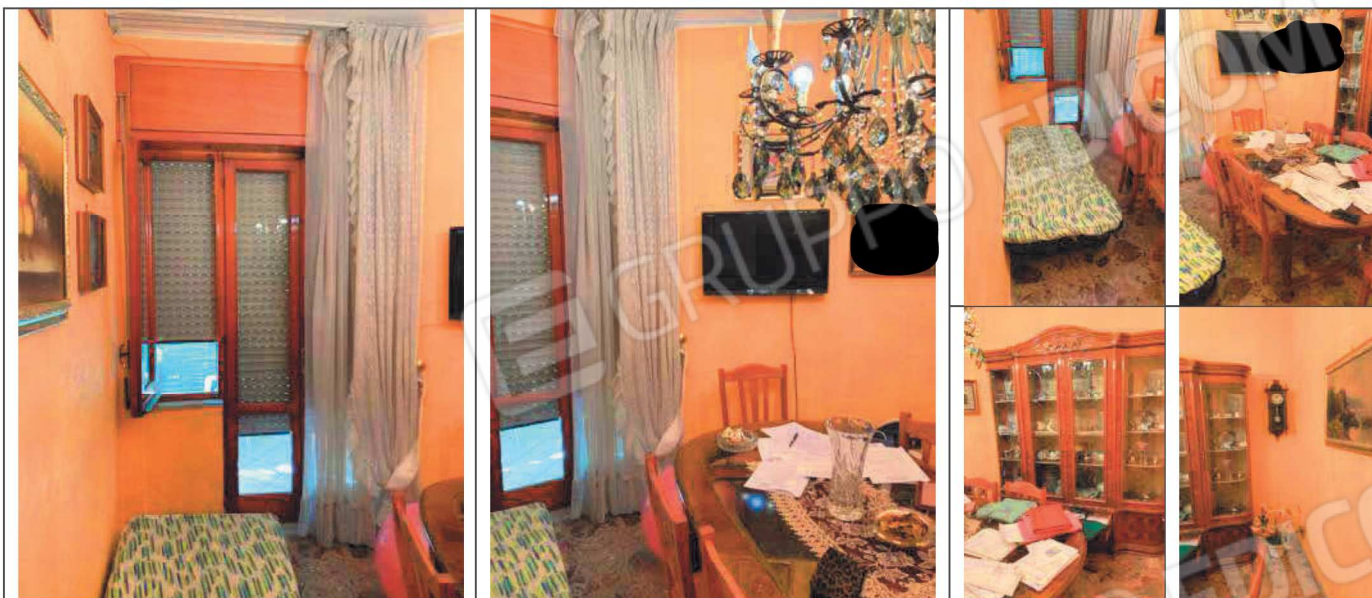


Foto 41, 42, 43, 44, 45, 46: viste soggiorno



Foto 47, 48, 49, 50, 51, 52: viste W.C.

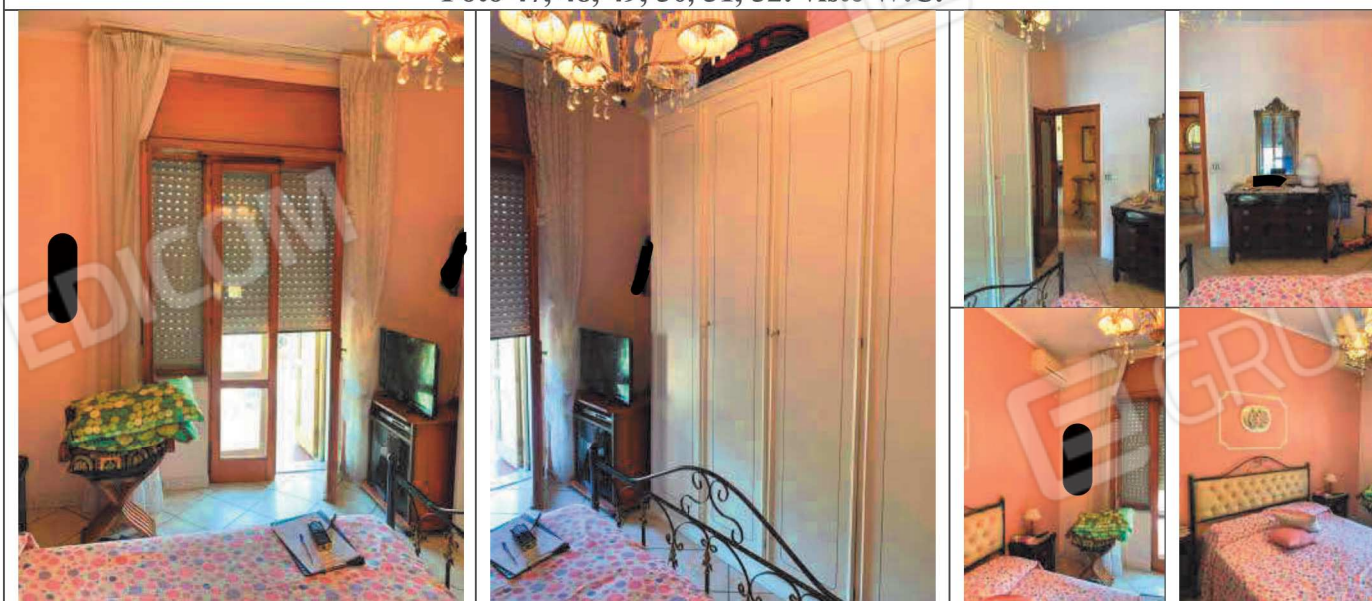


Foto 53, 54, 55, 56, 57, 58: viste stanza da letto 1 (st. letto matrimoniale)

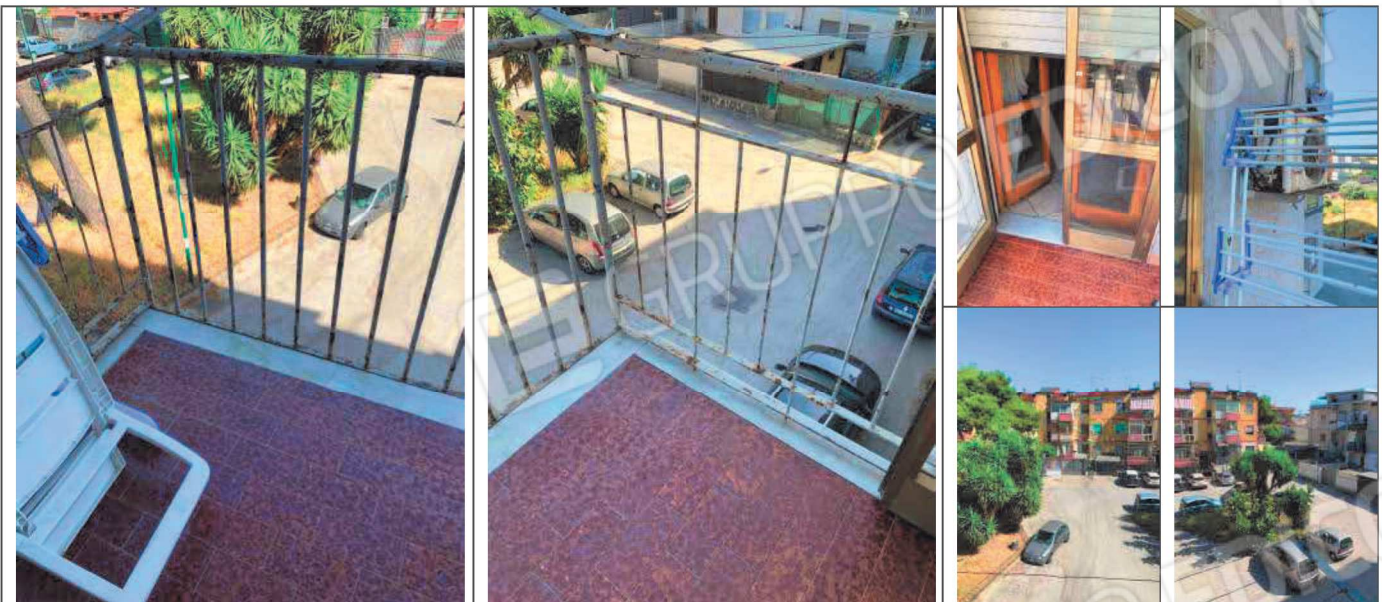


Foto 59, 60, 61, 62, 63, 64: viste balcone 2 - Sud/Est

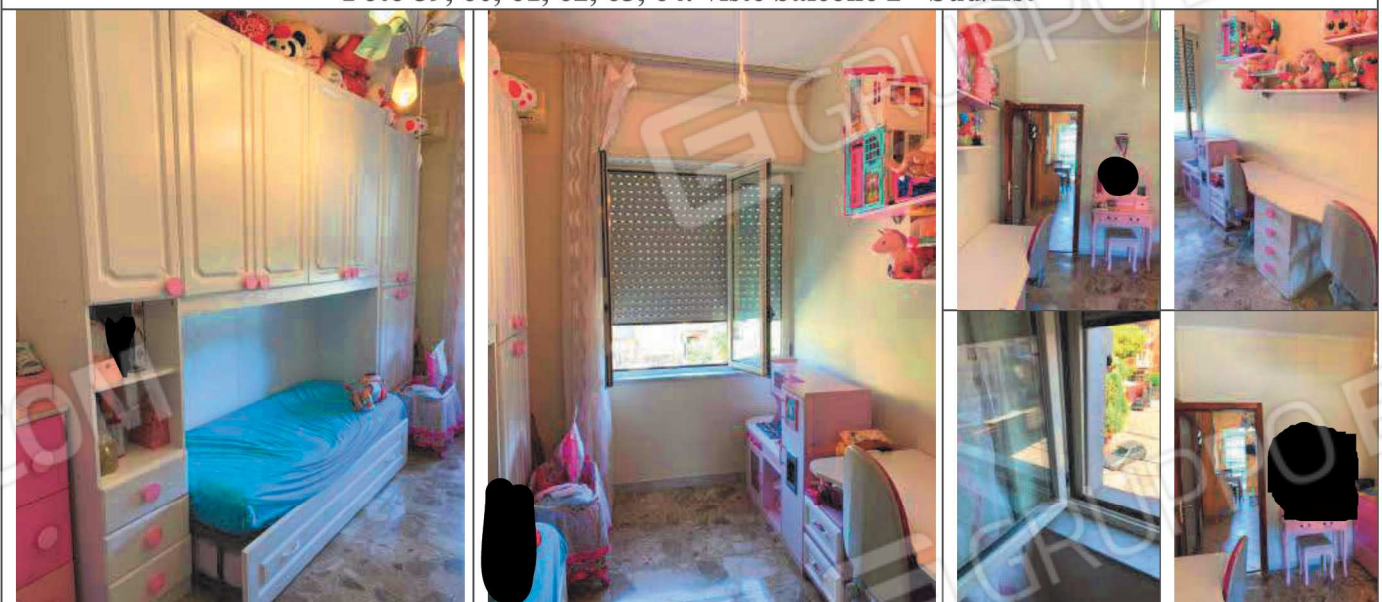


Foto 65, 66, 67, 68, 69, 70: viste stanza da letto 2 (stanzetta)



Foto 71, 72, 73: viste ripostiglio