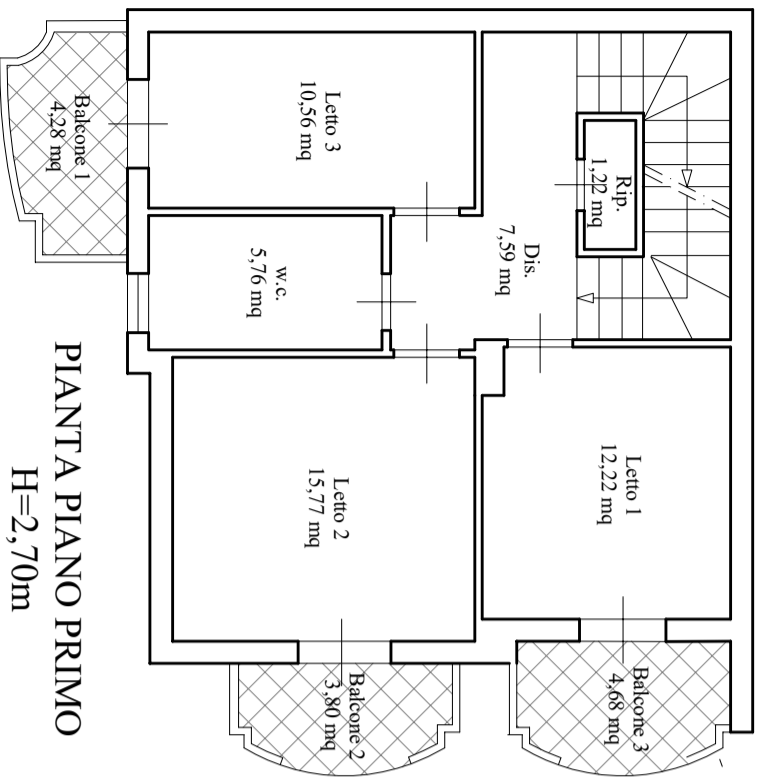
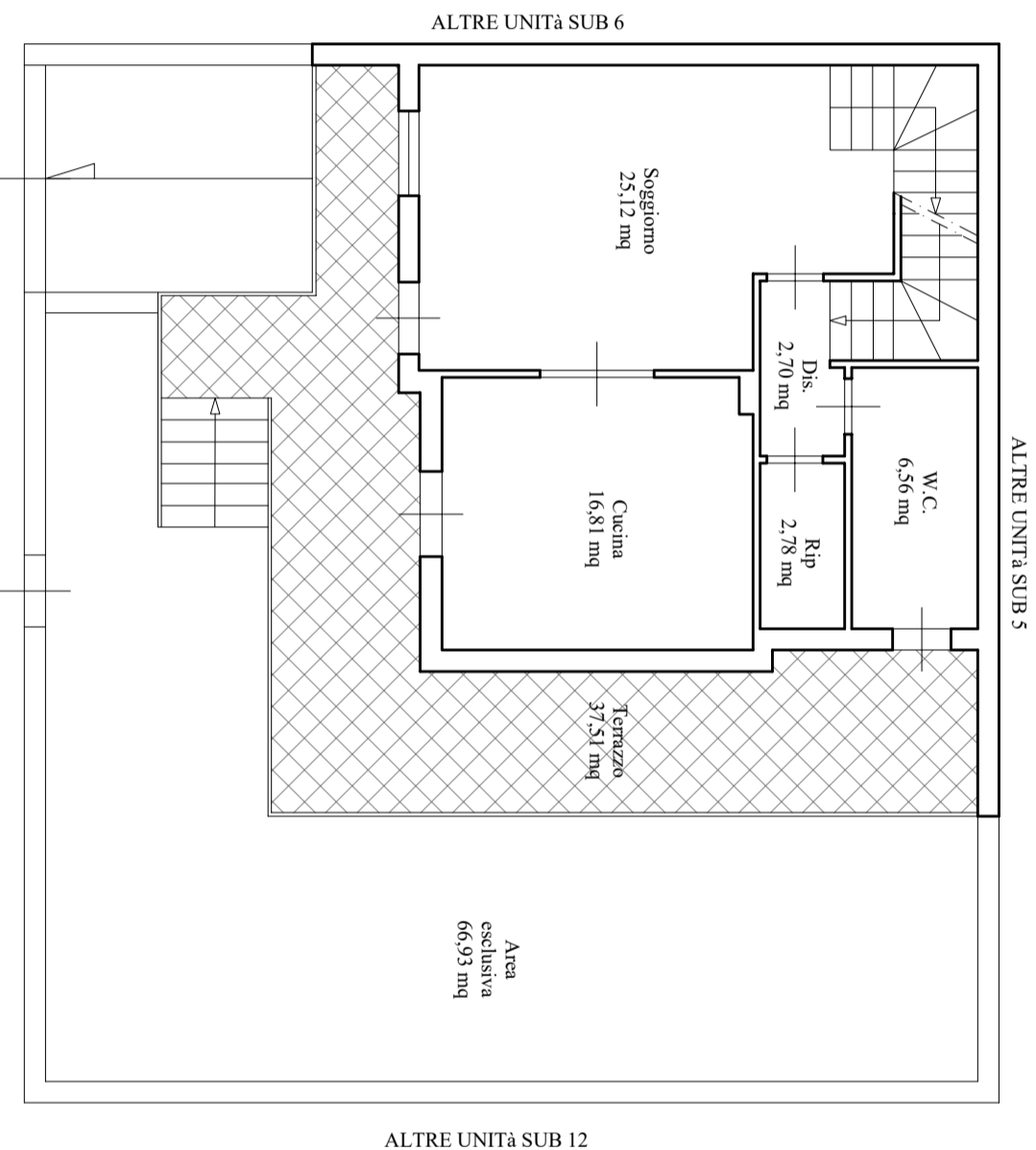


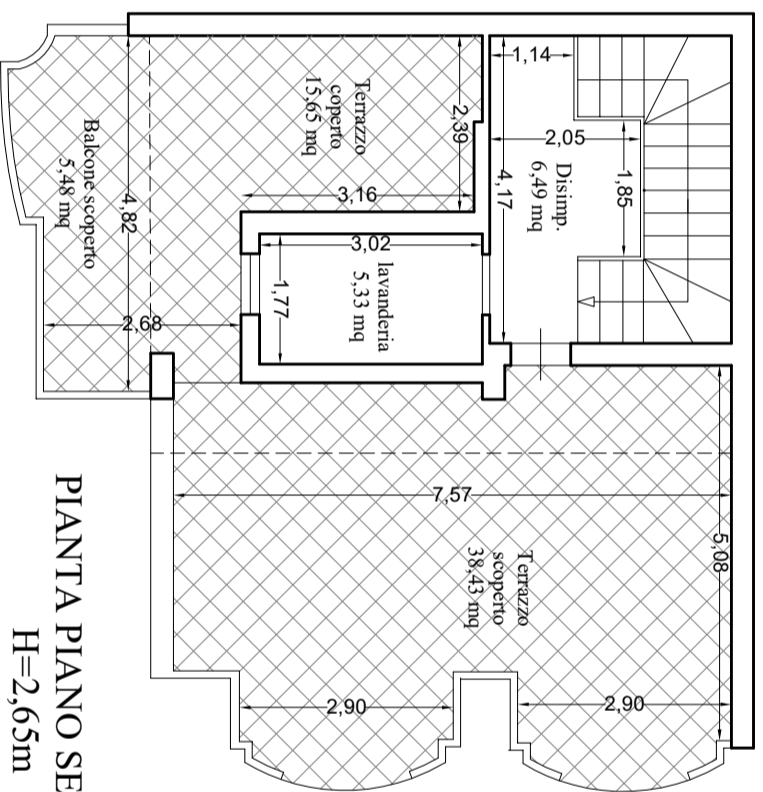
PIANTA PIANO SEMINTERRATO
H=2,85m



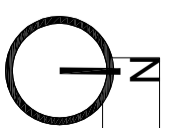
PIANTA PIANO PRIMO
H=2,70m



PIA 6717 - TRAVERSA VIA CAMPOTONICO
PIANTA PIANO RIALZATO
H=2,70m



PIANTA PIANO SECONDO
H=2,65m



Procedura esecutiva n. 405/18 +178/19



Allegato n.3a
LOTTO 7 Piano terra e interrato, primo e secondo - Planimetria quotata con indicazione delle destinazioni d'uso

L'esperto
ing. Giuseppina Merola

Scala 1:100